



INSTALLATION INSTRUCTIONS

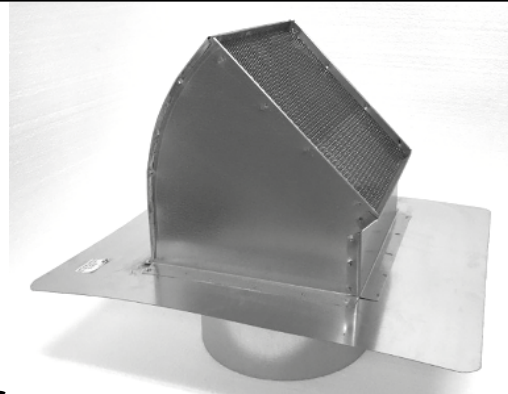
TRADE-WIND® 10" WALL CAP

PERFORMANCE · QUALITY · CUSTOMER SERVICE

REVISED: JANUARY 1, 2023

MODEL	DIAMETER	HEIGHT
HVWC10	9 3/4"	11"

ITEM #: 3BL-35-484WC



READ AND SAVE THESE INSTRUCTIONS

Before beginning installation, please thoroughly read and become familiar with these instructions. Installation and service must be completed by a qualified installer. Failure to properly install this product may void the warranty. Always observe local building codes.

DESCRIPTION:

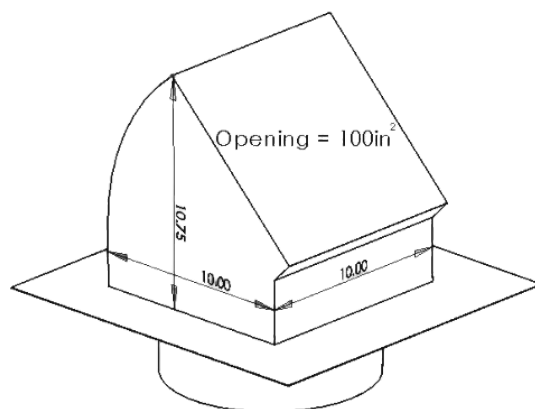
Trade-Wind® Wall Cap is designed to be installed as a termination of a 10" round duct run from either a Trade-Wind indoor ventilation product or our outdoor BBQ Hood or BBQ Liner.

INSTALLATION DETAILS:

The Wall Cap has a 9.75" round duct collar for attaching duct to the wall cap. Be sure and secure duct to wall cap collar using 3 or 4 equally spaced sheet metal screws along with metal foil duct tape. Use siding industry standard procedures for attaching the wall cap flashing to sub wall material and weather proofing. Trade-Wind highly recommends installation of the wall cap by a construction professional to insure proper installation.

WARNING:

Trade-Wind® Wall Cap must be properly sealed by your installation team using appropriate sealant.



For more information, please contact your dealer or your TRADE-WIND® representative.

800 WEST GRANT STREET
PHOENIX, AZ 85007
1-800-955-5737
602-900-8500

T-WUSA.COM