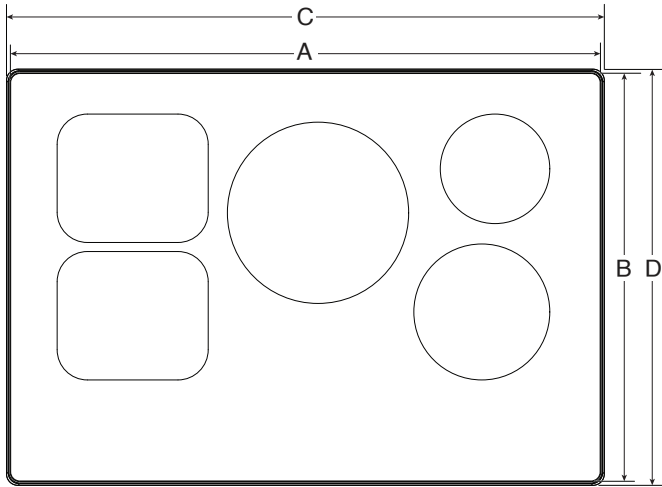
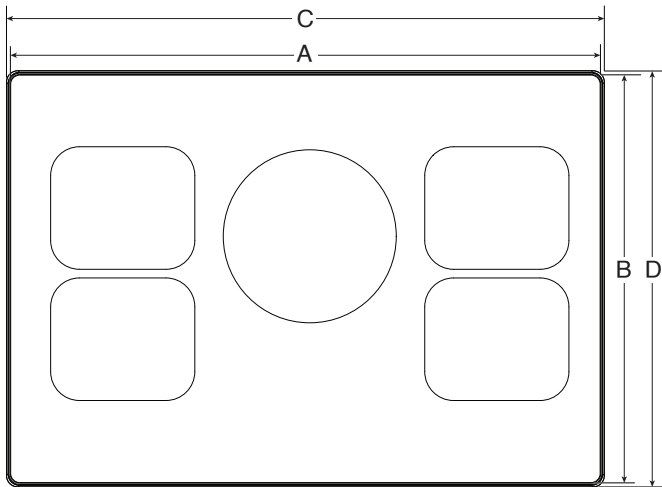


INDUCTION COOKTOP  
PRODUCT DIMENSIONS

MODEL #	30" Cooktop KCIT730SBL/KCIT730SSS		36" Cooktop KCIT736SBL/ KCIT736SSS	
Unit of Measurement	in	cm	in	cm
Overall Width without Frame (A)	31¾	78.2	36 <sup>5</sup> / <sub>16</sub>	92.2
Depth without Frame (B)	21 <sup>5</sup> / <sub>16</sub>	54.1	21 <sup>5</sup> / <sub>16</sub>	54.1
Overall Width with Frame (C)	31 <sup>5</sup> / <sub>16</sub>	79.2	36 <sup>11</sup> / <sub>16</sub>	93.2
Depth with Frame (D)	21 <sup>11</sup> / <sub>16</sub>	55.1	21 <sup>11</sup> / <sub>16</sub>	55.1



TOP VIEW 30" MODEL

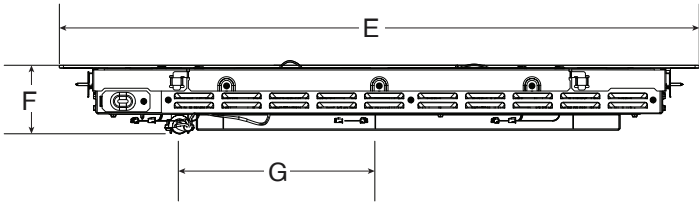


TOP VIEW 36" MODEL

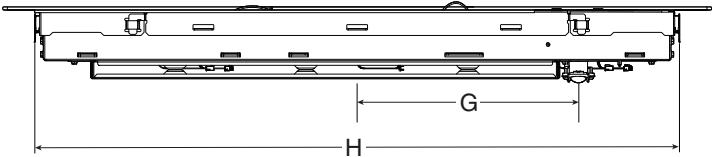
**IMPORTANT:** Dimensional specifications are provided for planning purposes only.  
**Do not make any cutouts based on this information.** Refer to the Installation Guide before selecting cabinetry, verifying electrical/gas connections, making cutouts or beginning installation.  
All KitchenAid® appliances are appropriately UL, CUL or CSA approved.

INDUCTION COOKTOP  
PRODUCT DIMENSIONS

MODEL #	30" Cooktop KCIT730SBL/KCIT730SSS		36" Cooktop KCIT736SBL/ KCIT736SSS	
Unit of Measurement	in	cm	in	cm
Glass Width (E)	30 <sup>3</sup> / <sub>4</sub>	78.2	36 <sup>5</sup> / <sub>16</sub>	92.2
Electric Inlet to Surface (F)	3 <sup>15</sup> / <sub>16</sub>	9.9	3 <sup>15</sup> / <sub>16</sub>	9.9
Center to Electric Inlet (G)	11 <sup>3</sup> / <sub>8</sub>	28.8	12 <sup>5</sup> / <sub>16</sub>	31.2
Recessed Cooktop Width (H)	29 <sup>1</sup> / <sub>2</sub>	74.8	33	83.9



FRONT VIEW

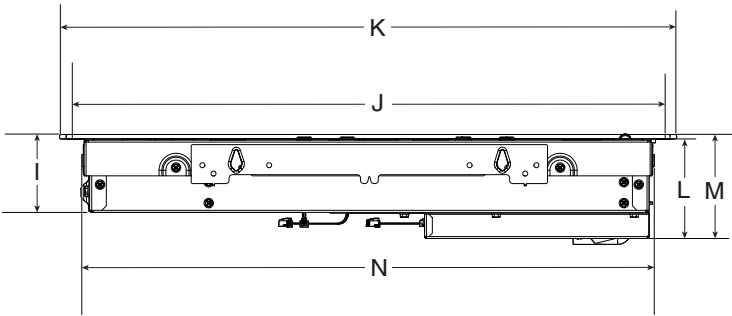


BACK VIEW

**IMPORTANT:** Dimensional specifications are provided for planning purposes only.  
**Do not make any cutouts based on this information.** Refer to the Installation Guide before selecting cabinetry, verifying electrical/gas connections, making cutouts or beginning installation.  
All KitchenAid® appliances are appropriately UL, CUL or CSA approved.

INDUCTION COOKTOP  
PRODUCT DIMENSIONS

MODEL #	30" Cooktop KCIT730SBL/KCIT730SSS		36" Cooktop KCIT736SBL/ KCIT736SSS	
Unit of Measurement	in	cm	in	cm
Control Panel Height (I)	2 <sup>3</sup> / <sub>4</sub>	7	2 <sup>3</sup> / <sub>4</sub>	7
Depth without Frame (J)	21 <sup>5</sup> / <sub>16</sub>	54.1	21 <sup>5</sup> / <sub>16</sub>	54.1
Depth with Frame (K)	21 <sup>11</sup> / <sub>16</sub>	55.1	21 <sup>11</sup> / <sub>16</sub>	55.1
Recessed Cooktop Height (L)	3 <sup>1</sup> / <sub>2</sub>	8.9	3 <sup>1</sup> / <sub>2</sub>	8.9
Cooking Surface Height (M)	3 <sup>3</sup> / <sub>4</sub>	9.3	3 <sup>3</sup> / <sub>4</sub>	9.3
Recessed Cooktop Depth (N)	20 <sup>1</sup> / <sub>4</sub>	51.4	20 <sup>1</sup> / <sub>4</sub>	51.4



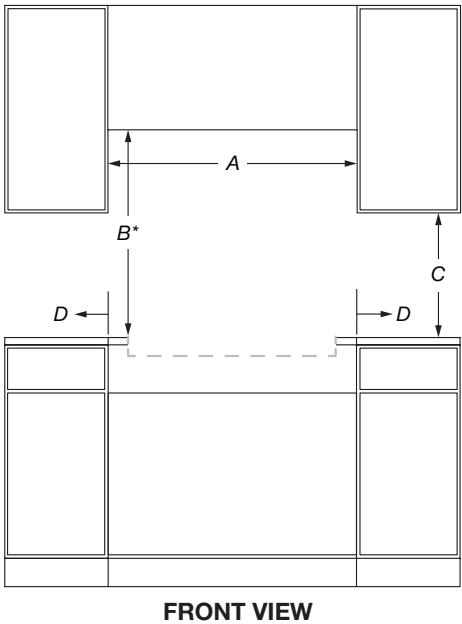
SIDE VIEW

**IMPORTANT:** Dimensional specifications are provided for planning purposes only.  
**Do not make any cutouts based on this information.** Refer to the Installation Guide before selecting cabinetry, verifying electrical/gas connections, making cutouts or beginning installation.  
All KitchenAid® appliances are appropriately UL, CUL or CSA approved.

INDUCTION COOKTOP  
OPENING/CLEARANCE DIMENSIONS

MODEL #	30" Cooktop KCIT730SBL/KCIT730SSS		36" Cooktop KCIT736SBL/ KCIT736SSS	
Unit of Measurement	in	cm	in	cm
Combustible Area above Cooking Surface Width (minimum) (A)	30	76.2	36	91.4
Bottom of Cabinet Height above Cooking Surface (minimum) (B)*	30	76.2	30	76.2
Bottom of Cabinet Height above Countertop (minimum) (C)	18	45.7	18	45.7
Distance to Fixed Wall or Combustible Material (D)	1	2.5	1	2.5

\*If installing a hood above the cooktop, follow the hood instructions for dimensional clearances above the cooking surface.



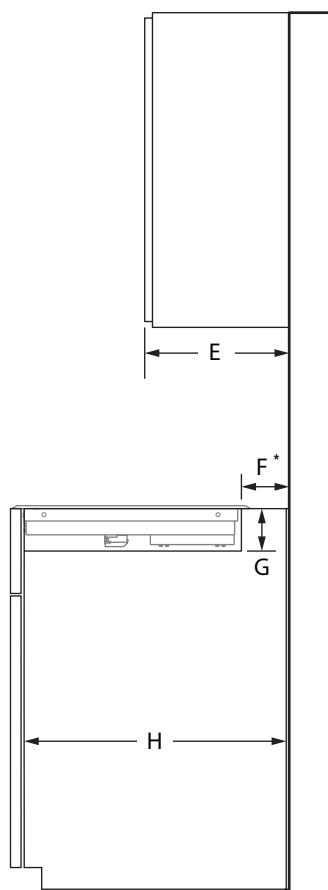
**IMPORTANT:** Dimensional specifications are provided for planning purposes only.  
**Do not make any cutouts based on this information.** Refer to the Installation Guide before selecting cabinetry, verifying electrical/gas connections, making cutouts or beginning installation.  
All KitchenAid® appliances are appropriately UL, CUL or CSA approved.

## INDUCTION COOKTOP

### OPENING/CLEARANCE DIMENSIONS

MODEL #	30" Cooktop KCIT730SBL/KCIT730SSS		36" Cooktop KCIT736SBL/ KCIT736SSS	
	in	cm	in	cm
Recommended Upper Cabinet Depth (E)	13	33	13	33
Cutout to Wall Depth (if backwall is constructed of non-combustible material) (F)*	1	2.5	1	2.5
Cutout to Wall Depth (if backwall is constructed of combustible material) (F)*	1	2.5	1	2.5
Cabinet to Countertop Height (G)	3 <sup>15</sup> / <sub>16</sub>	10	3 <sup>15</sup> / <sub>16</sub>	10
Cabinet Depth (H)	23 <sup>1</sup> / <sub>4</sub>	59.1	23 <sup>1</sup> / <sub>4</sub>	59.1

\*If the back wall is constructed of a combustible material and a backsplash is not installed, a 7<sup>3</sup>/<sub>4</sub>" (19.7 cm) minimum clearance is required from the cutout or 6" (15.2 cm) minimum clearance from the back edge of the cooktop.



**SIDE VIEW**

**IMPORTANT:** Dimensional specifications are provided for planning purposes only.

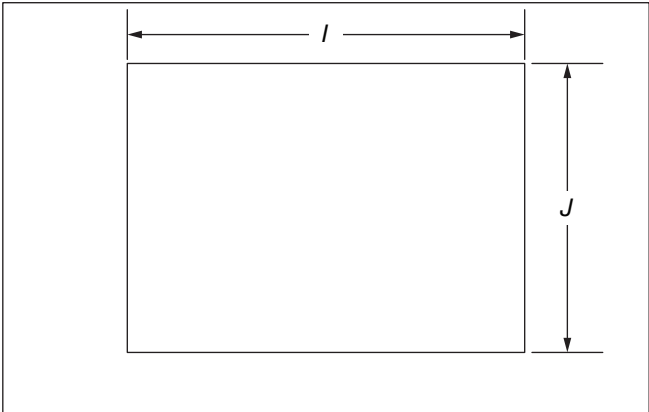
**Do not make any cutouts based on this information.** Refer to the Installation Guide before selecting cabinetry, verifying electrical/gas connections, making cutouts or beginning installation.

All KitchenAid® appliances are appropriately UL, CUL or CSA approved.

INDUCTION COOKTOP  
OPENING/CLEARANCE DIMENSIONS

MODEL #	30" Cooktop KCIT730SBL/KCIT730SSS		36" Cooktop KCIT736SBL/ KCIT736SSS	
Unit of Measurement	in	cm	in	cm
Countertop and Cabinet Cutout Width (I)	29½	75	33	84
Countertop and Cutout Depth (J)	20⅞	51.9	20⅞	51.9

**NOTE:** Due to manufacturing factory tolerances, these are nominal dimensions. You may need to readjust to meet your clearance.



TOP VIEW

**IMPORTANT:** Dimensional specifications are provided for planning purposes only.  
**Do not make any cutouts based on this information.** Refer to the Installation Guide before selecting cabinetry, verifying electrical/gas connections, making cutouts or beginning installation.  
All KitchenAid® appliances are appropriately UL, CUL or CSA approved.

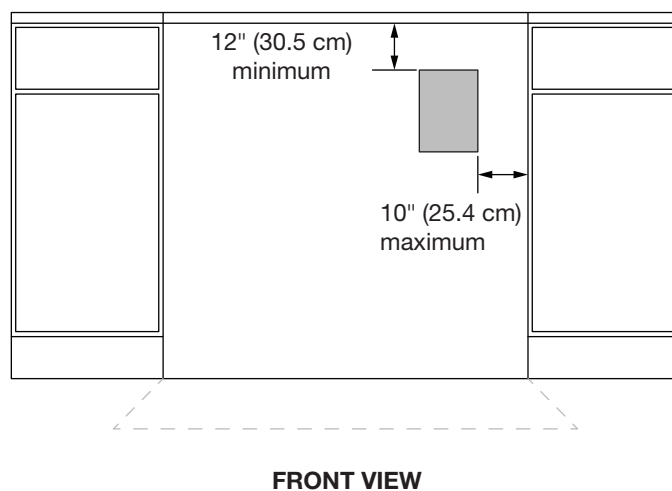
## INDUCTION COOKTOP

### ELECTRICAL REQUIREMENTS

#### ELECTRIC REQUIREMENTS CHECKLIST

- A 240 V, 60 Hz, AC only, fused, electrical circuit is required.
- For 30" (78.2 cm) cooktops, use a 50 A circuit.
- For 36" (92.2 cm) cooktops, use a 50 A circuit.
- A dedicated circuit is recommended.

#### RECOMMENDED ELECTRICAL OUTLET ZONE



**NOTE:** If you have questions about your electrical supply, call a licensed, qualified electrician.

**IMPORTANT:** Dimensional specifications are provided for planning purposes only.

**Do not make any cutouts based on this information.** Refer to the Installation Guide before selecting cabinetry, verifying electrical/gas connections, making cutouts or beginning installation.

All KitchenAid® appliances are appropriately UL, CUL or CSA approved.