

# INSTALLATION

## Before First Use:

- Remove all packing materials and wash the inside with lukewarm water and mild detergent. Odors from manufacturing will dissipate after the appliance begins cooling.
- After delivery, let the appliance stand upright for at least 24 hours before powering it on to ensure proper oil distribution within the compressor.
- If the door hinge needs to be switched from one side to the other, refer to the manual for instructions on how to reverse the door. Attach the door handle if it's not already in place.

## Installation Tips:

### **WARNING**

*This appliance must be installed in accordance with all local codes and ordinances.*

1. The appliances are designed to be built-in or recessed or free-standing installation.
2. CAUTION: This appliance is designed for storing and cooling wines, beverages and drinks. Do not store perishable food, medicine or other medical products.
3. Place your appliance on a floor/surface that is strong enough to support it when it is fully loaded. To level your unit, adjust the front adjustable legs at the bottom of the unit.
4. For freestanding installation, 5 inches (127mm) of space between the back and sides of the unit are suggested, which allows the proper air circulation to cool the compressor and condenser for energy saving. Even with built-in installation, it is a must to keep ¼" (5mm) space on each side and at the top to ensure proper service access and ventilation. Take care that the air vent at the front of the appliance must never be covered or blocked in any way.
5. Locate the unit away from direct sunlight and sources of heat (stove, heater, radiator, etc.). Direct sunlight may affect the acrylic coating and heat sources may increase electrical consumption. Extreme cold ambient temperatures may also cause the unit not to perform properly.
6. Avoid locating the unit in damp areas.
7. Plug the unit into an exclusive, easily accessible and properly grounded wall outlet. Do not under any circumstances cut or remove the third (ground) prong from the power cord. Any questions concerning power and/or grounding should be directed towards a qualified electrician or an authorized products service centre.
8. The appliance must be installed to all electrical, plumbing, water and drain connections in accordance with state and local codes.
9. IMPORTANT: HIGH HUMID CLIMATE. During periods of high humidity, some condensation may appear on outside surface of glass door. This condensation will disappear when humidity levels drop. For prevention, it is advisable to install the appliance with sufficient ventilation in a dry and/or air-conditioned environment.
10. The appliance has a power switch and/or OFF position for energy saving and safety reasons.

## Built-Under Installation:

The appliance should not block the front ventilation. The space between the worktop and the unit should be 31.5 to 35.43 inches for proper airflow. Adjust the front grille as necessary using the screws provided.

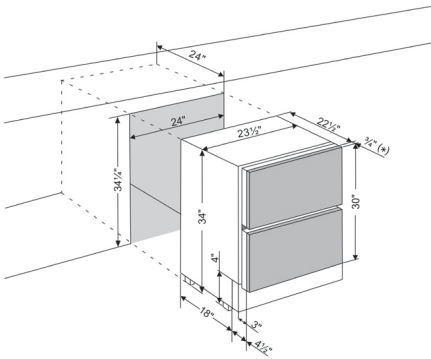
## BUILT-UNDER INSTRUCTIONS

Make sure your installation does not block the front ventilation grill.

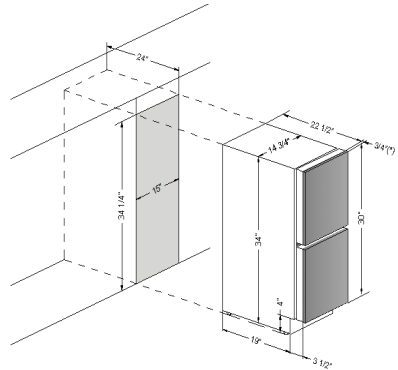
If the unit is fully integrated to be installed for fitting kitchen plinth, make sure that the ventilation gaps in the plinth are at least 118 square inches and remove the ventilation grilles, so that warm air can disperse unhindered. Otherwise, the appliance has to work harder, resulting in an increase in electricity consumption.

NOTE: When pushing the appliance into the niche, make sure that the mains cable does not get trapped.

KM-BIR1D1F-PR, KIM-BIR2D-PR



KM-BIR2D15-PR



(\*) The custom panel and handle are not provided.

## ELECTRICAL CONNECTION

Check that the voltage marked on the product corresponds with your supply voltage.

### WARNING

*Improper use of the grounded plug can result in the risk of electrical shock. If the power cord is damaged, have it replaced by a qualified electrician or an authorized service center.*

This appliance should be properly grounded for your safety. The power cord of this appliance is equipped with a three-prong plug which is compatible with standard three-prong wall outlets to minimize the possibility of electrical shock.

Do not under any circumstances cut or remove the third (ground) prong from the power cord supplied. For personal safety, this appliance must be properly grounded.

This appliance requires a standard 115/120 Volt AC ~ 60Hz three-prong grounded electrical outlet. Have the wall outlet and circuit checked by a qualified electrician to make sure the outlet is properly grounded. When a standard 2-prong wall outlet is encountered, it is your responsibility and obligation to have it replaced with a properly grounded 3-prong wall outlet.

To prevent accidental injury, the cord should be secured behind the appliance and not left exposed or dangling.

The appliance should always be plugged into its own individual electrical outlet which has a voltage rating that matches the rating label on the appliance. This provides the best performance and also prevents overloading house wiring circuits that could cause a fire hazard from overheating. Never unplug the appliance by pulling on the power cord. Always grip the plug firmly and pull straight out from the receptacle. Replace or replace immediately all power cords that have become frayed or otherwise damaged. Do not use a cord that shows cracks or abrasion damage along its length or at either end. When moving the appliance, be careful not to damage the power cord.

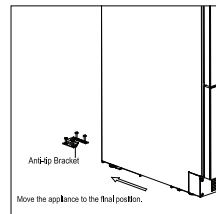
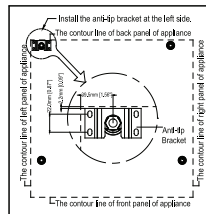
### EXTENSION CORD

Because of potential safety hazards under certain conditions, it is strongly recommended that you do not use an extension cord with this appliance. However, if you must use an extension cord it is absolutely necessary that it be a UL-CUL-listed, 3-wire grounding type appliance extension cord having a grounding type plug and outlet and that the electrical rating of the cord be 115 volts and at least 10 amps.

### ANTI-TIP BRACKET INSTALLATION

To reduce the risk of tipping the unit by abnormal usage or improper loading, the appliance must be secured by properly installing the anti-tip device (if your model supplied with it) packed with the appliance.

- Place the anti-tip bracket on the floor as shown in the figure. An anti-tip bracket can be installed at the left side.
- Mark the locations of the 4 holes of the anti-tip bracket on the floor.
- Use an 8mm / 5/16" masonry drill bit and insert plastic anchors.
- Secure bracket to floor using screws.
- Slide appliance into position and make sure the leg engages the anti-tip bracket.



## OVERLAY PANEL DOOR DESIGN GUIDE

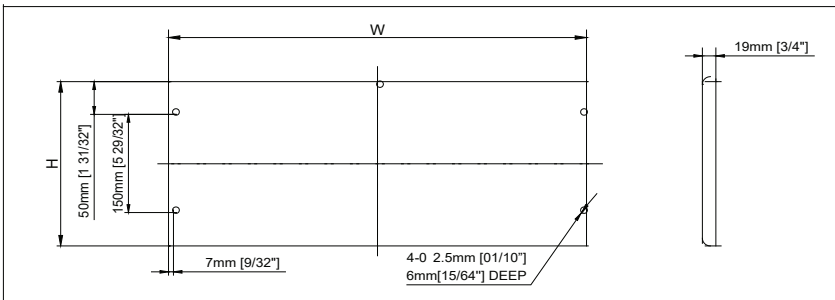
# Model: KM-BIR2D15-PR, KM-BIR1DF-PR and KM-BIR2D-PR

### Door panel preparation

Depending on the model prepare the overlay panel to the dimensions shown below. Then attach the handle to the overlay panel by using the flat head screws and drive the screws flush with the panel.

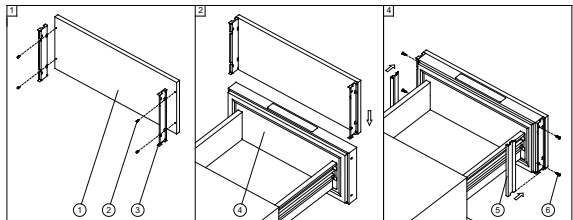
NOTE:

1.  $H$  = Height of door +  $3/80"$  [1mm],  $W$  = Width of door +  $3/4"$  [22mm]
2. Weight of the overlay panel should not exceed 15 Lbs
3. It is important to ensure that all drilled holes are drilled to the correct depth in order to avoid splits in the wood when hardware is installed.
4. Drill the handle installation holes in the overlay panel according to the handle you are planning to use.



### Door panel installation

1. Attach two wood mounting brackets (3) to the prepared wood overlay panel (1) by using 4 wood screws ST4x10 Type AB Philips (2) (Fig. 1).
2. Gently slide the overlay panel on the door (4) (Fig. 2).
3. Fix the wood overlay panel on the door by using 4 screws ST4x10 Type AB Philips (8). Attach the decorative side trims (5) to the mounting brackets (3). (Fig. 3)



# OPERATION

The appliance should be placed in a position where the ambient temperature is between 60°F and 95°F. If the ambient temperature is above or below this range, the performance of the unit may be affected. For example, placing your unit in extreme cold or hot conditions may cause interior temperatures to fluctuate. The range if the set temperature may not be reached.

## NOTE:

When you use the appliance for the first time or restart the appliance after having been shut off for a long time, there could be a few degrees variance between the temperature you select, and the one indicated on the LED readout. This is normal and it is due to the length of the activation time. Once the unit is running for a few hours everything will be back to normal.



If the unit is unplugged, has lost power, or is turned off, you must wait 3 to 5 minutes before restarting the unit. If you attempt to restart before this time delay, the unit will not start.


## REFRIGERATOR

KM-BIR2D-PR , KM-BIR2D15-PR

### USE AND CONTROL

#### POWER

To turn the appliance off, press and hold the  key for 5 seconds until temperature display goes out. To turn the appliance on, press and hold the  key for 1 second until temperature display lights up.

NOTE: Pressing the  key once can switch off the audible alarm when the alarm is on.

#### UP

Used to increase (warm) the set temperature by 1°F.

#### DOWN

Used to decrease (cool) the set temperature by 1°F.

#### Display

Display the digital temperature and service indicators.

#### Indicator Light / Multi-key Function

The indicator light is the dot located at the bottom right corner of the display. The indicator light will be on when a multi-key function is selected. To perform a multi-key function, touch and hold the first key, then touch the rest key for at least 5 seconds and then release all the keys.

#### °F/°C Selector

Select the temperature display setting in Fahrenheit or Celsius degree.



## Child Lock

If in 2 minutes or longer without touching any key, the child lock will be activated automatically for models with the control outside of cabinet. To cancel the lock, touch the UP and DOWN keys simultaneously for at least 5 seconds.

## Interior LED Light

The appliance is equipped with an interior LED light system which will be turned ON when a door is opened. The interior light will go out approx. 5 seconds after the door is closed.

The unit is equipped with the LED type lights and they are designed for extremely long life. They are not user serviceable. To change them please contact the service department.

**IMPORTANT:** Use only the original LED light fittings provided by the manufacturer.

## Setting the Temperature Control

- You can set the temperature by touching the UP and DOWN keys. When you press either of the two keys for the first time, the LED readout will show the original temperature set previously. (The temperature preset at the factory is 39°F.)
- The temperature will increase 1°F if you press the UP key once, or the temperature will decrease 1°F if you press the DOWN key once. The display flashes while you make the setting. After the temperature has been set, the display shows the current inner temperature.
- The range of set temperatures is from 36°F to 43°F or from 36°F to 54°F or from 36°F to 68°F or from 25°F to 43°F depending on the model.
- To view the set temperature at any time, press the UP or DOWN key; the set temperature will temporarily flash in the display for 5 seconds. Then the display shows the current inner temperature again.

## REFRIGERATOR/FREEZER

KM-BIR1D1F-PR

### USE AND CONTROL



### The Controls of Your Unit

#### Power ①

To turn the appliance off, press and hold the ① key for 5 seconds until temperature display goes out. To turn the appliance on, press and hold the ① key for 1 seconds until temperature display lights up.

NOTE: Pressing the ① key once can switch off the audible alarm when the alarm is on.

#### UP +

To increase (warm) the set temperature by 1°F.

#### DOWN -

To decrease (cool) the set temperature by 1°F.

#### °F/°C Selector

Select the temperature display setting in Fahrenheit or Celsius degree.

**Child Lock**

\*\* If in 2 minutes or longer without touching any key, the child lock will be activated automatically. To cancel the lock, touch the UP and DOWN keys at the same time for at least 5 seconds and the indicator light will flash three times to confirm the action if the model is with Child Lock function.

**Indicator Light / Multi-key Function**

The indicator light is the dot located at the bottom right corner of the display. The indicator light will be on when a multi-key function is selected. To perform a multi-key function, touch and hold the first key, then touch the rest key for at least 5 seconds and then release all the keys.

**Interior LED Light**

The appliance is equipped with an interior LED light system which will be turned ON when a door is opened. The interior light will go out approx. 5 seconds after the door is closed.

The unit is equipped with the LED type lights and they are designed for extremely long life. They are not user serviceable. To change them pls contact the service department.

**IMPORTANT: Use only the original LED light fittings provided by the manufacturer.**

**Setting the Temperature Control**

- The unit has two separate temperature compartments. You can set the temperature of the bottom/left compartment (freezer) by touching the left UP and DOWN symbols and set the temperature of the top/right compartment (refrigerator) by touching the right UP and DOWN symbols. When you touch either key for the first time, the LED readout will show the original temperature set previously. (The temperature preset at the factory is 0°F for freezer compartment and 38°F or 39°F for refrigerator compartment.)
- The temperature you are setting will increase by one degree each time you touch the UP symbol, and will decrease by one degree each time you touch the DOWN symbol.
- The range of the temperature control is from -11°F to 11°F for freezer compartment and from 36°F to 43°F for refrigerator compartment.
- To view the set temperature at any time, touch the UP or DOWN symbol. The set temperature will temporarily flash in the display window for 5 seconds. Then the display shows the current inner temperature again.

## Interior Light

The interior lighting makes it easy to view items and enhances the display of your collection. Touching and holding the LIGHT key for 5 seconds toggles between 2 modes of operation for the interior lights: functional (default) mode and showcase mode. If you are in functional (default) mode, the lights will turn on only when the door is open. The interior light will go out approx. 5 seconds after the door is closed. If you are in showcase mode, the lights will be on whether or not the door is open.

## Dynamic Cooling / Silent Mode

The appliance has two different running modes. In Silent mode once the required temperature is reached, the appliance will run without the fan. In Dynamic Cooling mode the fan cycles on and off to circulate the air even after the required temperature is reached. This ensures consistent humidity and temperature distribution in the unit. Using the dynamic mode increases the level of noise in operation.

## Shabbos Mode

Shabbos mode is available for the observance of certain religious holidays. This mode turns off the displays, interior light and audible alarms and prevents them from turning on again. Normal cooling operations will still take place.

To initiate Shabbos mode, press the POWER and LIGHT keys or the POWER and °C/F keys at the same time and hold for at least 5 seconds. The displays and interior lights will go out to confirm the Shabbos mode is ON. Shabbos mode can be canceled by repeating the above process. The Shabbos Mode will automatically turn off after 96 hours.

## Temperature Memory Function

In the event of a power interruption (power surge, breaker switch, etc.), the unit can remember the previous temperature settings, and when the power is recovered, the cabinet temperature will return to the same setting temperature as before power off.

## DEFROSTING

- Under normal operating conditions, the unit requires no manual defrosting.
- The evaporator behind the rear wall of the unit defrosts automatically. The condensate collects in the drainage channel behind the rear wall of the unit and flows through the drainage hole into the drip tray over/by the compressor where it evaporates.
- However, frost may accumulate on the evaporator if the unit is repeatedly opened in high heat or high humidity locations. If this frost pattern does not clear within 24 hours, your unit will require manual defrosting.

## Temperature Alarm and door alarm

- An audible alarm sounds if the storage temperature is not cold enough. The temperature display flashes at the same time.
- The cause of the temperature being too high may be:
  - Warm items were placed inside.
  - Too much warm ambient air flowed in when rearranging and removing contents.
  - Power failure for some time.
  - The appliance is faulty.

- The audible alarm is automatically silenced and the temperature display stops flashing when the temperature is sufficiently cold again.
- If the door has been left open for more than 60 seconds, the alarm will sound. Pressing the POWER key once will switch off the audible alarm.

## USING THE FREEZER (IF AVAILABLE)

- The freezer is designed for the long-term storage of frozen food. Storage time is up to three months.
- The storage life of frozen foods varies and the recommended storage time should not be exceeded.
- Pre-packaged commercially frozen food should be stored in accordance with the frozen foods manufacturer's instructions for a three-star frozen food storage compartment or home freezer.
- Place frozen food into the freezer as quickly as possible after purchase. If there are instructions on the packet, carefully follow these instructions regarding storage times.

## Eco Demo mode

Eco Demo mode can be activated by presenting the appliance at exhibitions or in salesrooms. In Eco Demo mode, the compressor and all fan motors are switched OFF. Also it is perfect as a cleaning mode. The refrigeration switches off while the lights stay on.

By pressing and holding the "UP" & "DOWN" and "LIGHT" or "°F/°C Selector" at the same time for at least 5 seconds, the indicator light will flash five times to confirm the input and the unit will operate in Eco Demo mode. Eco Demo mode can be canceled by repeating the above process.

## Operating Noises

The unit is cooled by a compressor (refrigeration aggregate). The compressor pumps coolant through the cooling system, producing operating noise. Even when the compressor cuts out, noises caused by changes in temperature and pressure are unavoidable. Operating noise will be most audible immediately after the compressor cuts in. It becomes quieter as the operating period continues.

The following noises are normal and occur from time to time:

- Gurgling sound, caused by the refrigerant flowing through the appliance's coils,
- Humming noise made by the motor compressor. This noise can get louder for brief periods when the motor is switching on.
- Crackling/popping sounds, resulting from the materials contraction and expansion due to temperature variations,
- Fan operating sound, to circulate the air within the wine cabinet.

Unusual noise is normally the result of improper installation. Under no circumstances must tubing come into contact with a wall, other furniture or with other tubing.

Where the unit is installed in an open-plan kitchen or in partition walls, the level of operating noise will be heard more acutely. However, this is due to the surrounding architecture and not to the unit.

An individual's perception of noise is directly linked to the environment in which the unit is located, as well as the specific type of model. Our appliances are in line with international standards for such appliances and in line with the latest technical developments. But please remember that the noise of the compressor and the coolant circulating in the system is unavoidable.

# MAINTENANCE

## **WARNING!**

- *To avoid possible injury due to electric shock, disconnect the power cord or turn off power at the circuit breaker panel or fuse box before cleaning the appliance.*
- *Clean only the parts of the appliance listed in this manual. Clean them only in the manner specified.*
- *Do not use a steam cleaner to clean this appliance. Steam could penetrate the electrical components and cause a short circuit.*
- *Do not allow water or cleaning fluids to penetrate into the electrical components or ventilation grill.*
- *Use only the types of cleaning solutions specified in this manual. NEVER clean appliance parts with flammable fluids.*
- *Do not use abrasives such as steel wool, scouring pads, rough sponges or scrub brushes.*

## **DOOR LOCK**

If the unit is provided with a lock system, the keys are located inside the plastic bag that contains the Owner's Manual. Insert the key into the lock, push in and turn it counterclockwise to unlock the door. To lock the door do the reverse operation making sure metal pin is engaged completely. Remove the key and place it in a secure place for safekeeping.

## **CLEANING YOUR APPLIANCE**

- Turn off the power, unplug the appliance, and remove all items including shelves.
- Wash the inside surfaces with a warm water and baking soda solution. The solution should be about 2 tablespoons of baking soda to a quart of water.
- Wash the shelves with a mild detergent solution. Wring excess water out of the sponge or cloth when cleaning any area of the controls.
- The sealing gasket around the door must be cleaned regularly to prevent discoloration and prolong service life. Use clean water. After cleaning the sealing gasket, check that it continues to provide a tight seal.
- Wash the outside cabinet with warm water and mild liquid detergent. Rinse well and wipe dry with a clean soft cloth.
- Do not clean the stainless steel with steel wool pads. We suggest using an all-in-one stainless steel cleaner to clean the stainless steel. Always clean in the direction of the grain.

## **PREVENTING STAINLESS STEEL RUST**

Use non-abrasive tools to clean stainless steel products. Soft cloths and plastic scouring pads will not harm the steel's passive layer.

Clean with polish lines. Some stainless steels have visible polishing lines or "grain". When visible lines are present, always scrub in a motion parallel to the lines. When the grain cannot be seen, polish in a consistent straight pattern and not in a circular motion.

Use alkaline, alkaline chlorinated or non-chloride containing cleaners. While many traditional cleaners are loaded with chlorides, the industry is providing an ever-increasing choice of non-chloride cleaners. If you are not sure of chloride content in the cleaner being used, contact your cleaner supplier. If your present cleaner contains chlorides, ask your supplier for an alternative. Avoid cleaners containing quaternary salt; it also can attack stainless steel and cause pitting and rusting.

Keep food equipment clean. Use alkaline, alkaline chlorinated or non-chloride cleaners at recommended strength. Clean frequently to avoid build-up of hard, stubborn stains. The single most likely cause of damage is chlorides in the water. Remember, adding heat to cleaners that contain chlorides dramatically increases their effect on stainless steel.

If chlorinated cleaners are used, immediately rinse and wipe equipment and supplies dry. The sooner you wipe standing water, especially when it contains cleaning agents, the better. After wiping equipment down, allow it to air dry. Oxygen helps maintain the stainless steel passive film.

## **POWER FAILURE**

In the event of a power interruption, all previous temperature settings are automatically memorized. If power is interrupted (power surge, breaker switch, etc.) and then powered up again, the unit will operate with the last temperature set-point.

Most power failures are corrected within a few hours and should not affect the temperature of your appliance if you minimize the number of times the door is opened. If the power is going to be off for a longer period of time, you need to take the proper steps to protect your contents.

## **VACATION TIME**

**Short holidays:** Leave the appliance in operation for holidays of less than three weeks.

**Long absences:** If the appliance will not be used for several months, remove all items, turn off the appliance and unplug. Clean and dry the interior thoroughly. To prevent odor and mold growth, leave the door open slightly, blocking it open if necessary.

## **MOVING YOUR APPLIANCE**

- Unplug the power plug from the electrical outlet.
- Remove the contents from the racks and all moving parts from inside.
- Raise the adjustable legs up to the base to avoid damage.
- Tape the door shut and lock it if with a lock system.
- Transport the appliance only in the upright position. Also protect the outside of the appliance with a blanket or similar item.

## **ENERGY SAVING TIPS**

- Should the unit be left empty for long periods of time, it is suggested that the appliance is unplugged, and after careful cleaning, leave the door ajar to allow air to circulate inside the cabinet in order to avoid possible condensation, mold or odors forming.
- The appliance should be installed in the coolest area of the room, away from heat producing appliances, and out of the direct sunlight.
- Ensure that the unit is adequately ventilated. Never cover air vents. Clean dust and dirt from the condenser at regular intervals.
- Only open the door for as long as necessary and for as short a time as possible.
- Let hot foods cool to room temperature before placing in the unit. Overloading the unit forces the compressor to run longer.
- Be sure to wrap foods properly, and wipe containers dry before placing them in the unit. This cuts down on frost build-up inside the unit.
- Unit shelves and storage bins should not be lined with aluminum foil, wax paper, or paper toweling. Liners interfere with cold air circulation, making the unit less efficient.
- Organize and label food to reduce door openings and extended searches. Remove as many items as needed at one time, and close the door as soon as possible.
- To allow air to circulate, do not overfill the appliance.

# TROUBLESHOOTING

## PROBLEMS WITH YOUR APPLIANCE

You can solve many common problems easily, saving you the cost of a possible service call. Try the suggestions below to see if you can solve the problem before calling customer service.

| PROBLEM                                       | POSSIBLE CAUSE  | REMEDY  |
|---|---|---|
| Appliance does not operate.                   | <ul style="list-style-type: none"> <li>Appliance is not connected to a power supply.</li> <li>The appliance is turned off.</li> <li>Circuit breaker has tripped or a fuse has blown.</li> </ul>   | <ul style="list-style-type: none"> <li>Connect the appliance.</li> <li>Switch on the appliance.</li> <li>Switch on circuit breaker or replace fuse.</li> </ul>  |
| Appliance is not cold enough.                 | <ul style="list-style-type: none"> <li>The temperature is not set correctly.</li> <li>The ambient temperature could require a different temperature setting.</li> <li>The door was opened too often.</li> <li>The door was not closed completely.</li> <li>Door is not hermetically sealed.</li> <li>The condenser is too dirty.</li> <li>The ventilation opening is blocked or too dusty.</li> </ul> | <ul style="list-style-type: none"> <li>Check the set temperature.</li> <li>Set a different temperature.</li> <li>Do not open the door more often than necessary.</li> <li>Close door properly.</li> <li>Check the door seal and clean or replace.</li> <li>Clean the condenser when necessary.</li> <li>Clear the obstructions and clean off the dust.</li> </ul> |
| Appliance turns itself on and off frequently. | <ul style="list-style-type: none"> <li>The room temperature is higher than average.</li> <li>A large amount of bottles has been added to the unit.</li> <li>The door is opened too often.</li> <li>The door is not closed completely.</li> <li>The door gasket does not seal properly.</li> </ul>   | <ul style="list-style-type: none"> <li>Put the appliance in a cooler place.</li> <li>Leave the appliance to work for a while until the set temperature has been reached.</li> <li>Do not open the door more often than necessary.</li> <li>Close door properly.</li> <li>Check the door seal and clean or replace.</li> </ul>                                     |
| The light does not work.                      | <ul style="list-style-type: none"> <li>Appliance is not connected to a power supply.</li> <li>Circuit breaker has tripped or a fuse has blown.</li> <li>The light was switched off on the control panel.</li> </ul>   | <ul style="list-style-type: none"> <li>Connect the appliance.</li> <li>Switch on circuit breaker or replace fuse.</li> <li>Switch on the light.</li> </ul>  |
| Vibrations.                                   | <ul style="list-style-type: none"> <li>The appliance is not properly level.</li> </ul>  | <ul style="list-style-type: none"> <li>Level the appliance with the adjustable feet.</li> </ul>   |
| The appliance seems to make too much noise.   | The rattling noise may come from the flow of the refrigerant, which is normal. As each cycle ends, you may hear gurgling sounds caused by the flow of refrigerant in your appliance. If temperature fluctuations occur, the contraction and expansion of the inner walls may cause popping and crackling noises.  |   |
|   | <ul style="list-style-type: none"> <li>The appliance is not properly level.</li> </ul>  | <ul style="list-style-type: none"> <li>Level the appliance with the adjustable feet.</li> </ul>   |
| The door will not close properly.             | <ul style="list-style-type: none"> <li>The appliance is not properly level.</li> <li>The door was reversed and not properly re-installed.</li> <li>The gasket is dirty.</li> <li>The shelves are out of position.</li> </ul>  | <ul style="list-style-type: none"> <li>Level the appliance with the adjustable feet.</li> <li>Check the door hinge and reassemble correctly.</li> <li>Clean the door gasket.</li> <li>Check the shelves and refit correctly.</li> </ul>   |

|   |   |   |
|---|---|---|
| <p>Display “E0”, “E1”, “E2”, “E3”, “E4”, “E5”, “E6” or “E7”.</p>        | <ul style="list-style-type: none"> <li>• “E0” indicates a communication error for 3 zone models.</li> <li>• “E1” or “E2” indicates that the air temperature sensor has failed.</li> <li>• “E3” or “E4” indicates that the defrost sensor in the evaporator has failed.</li> <li>• “E5” indicates a defrost heater failure.</li> <li>• “E6” indicates a solenoid valve failure.</li> <li>• “E7” indicates a door switch failure.</li> </ul>  | <ul style="list-style-type: none"> <li>• Call for service.</li> </ul>   |
| <p>The alarm sounds and the temperature display flashes.</p>            | <ul style="list-style-type: none"> <li>• Has the appliance door been open for longer than 60 seconds? If not, then the temperature has risen higher or fallen lower than the temperature that has been set. This could be due to: <ul style="list-style-type: none"> <li>- The appliance door being opened too often.</li> <li>- The ventilation opening being covered or too dusty.</li> <li>- A lengthy interruption to the power supply.</li> <li>- A large amount of bottles has been added to the unit.</li> </ul> </li> </ul> | <ul style="list-style-type: none"> <li>• If yes, close the door. <ul style="list-style-type: none"> <li>- Do not open the door more often than necessary.</li> <li>- Clear the obstructions and clean the dust.</li> <li>- Leave the appliance to work for a while until the set temperature has been reached.</li> </ul> </li> </ul> |
| <p>The icon “--” is lit up and flashing in the temperature display.</p> | <ul style="list-style-type: none"> <li>• The display temperature is out of the range.</li> </ul>  | <ul style="list-style-type: none"> <li>• Only temperatures within the display range 16~99°F can be shown. If the temperature is not within this range, the icon “--” will be displayed instead. That is normal.</li> </ul>  |