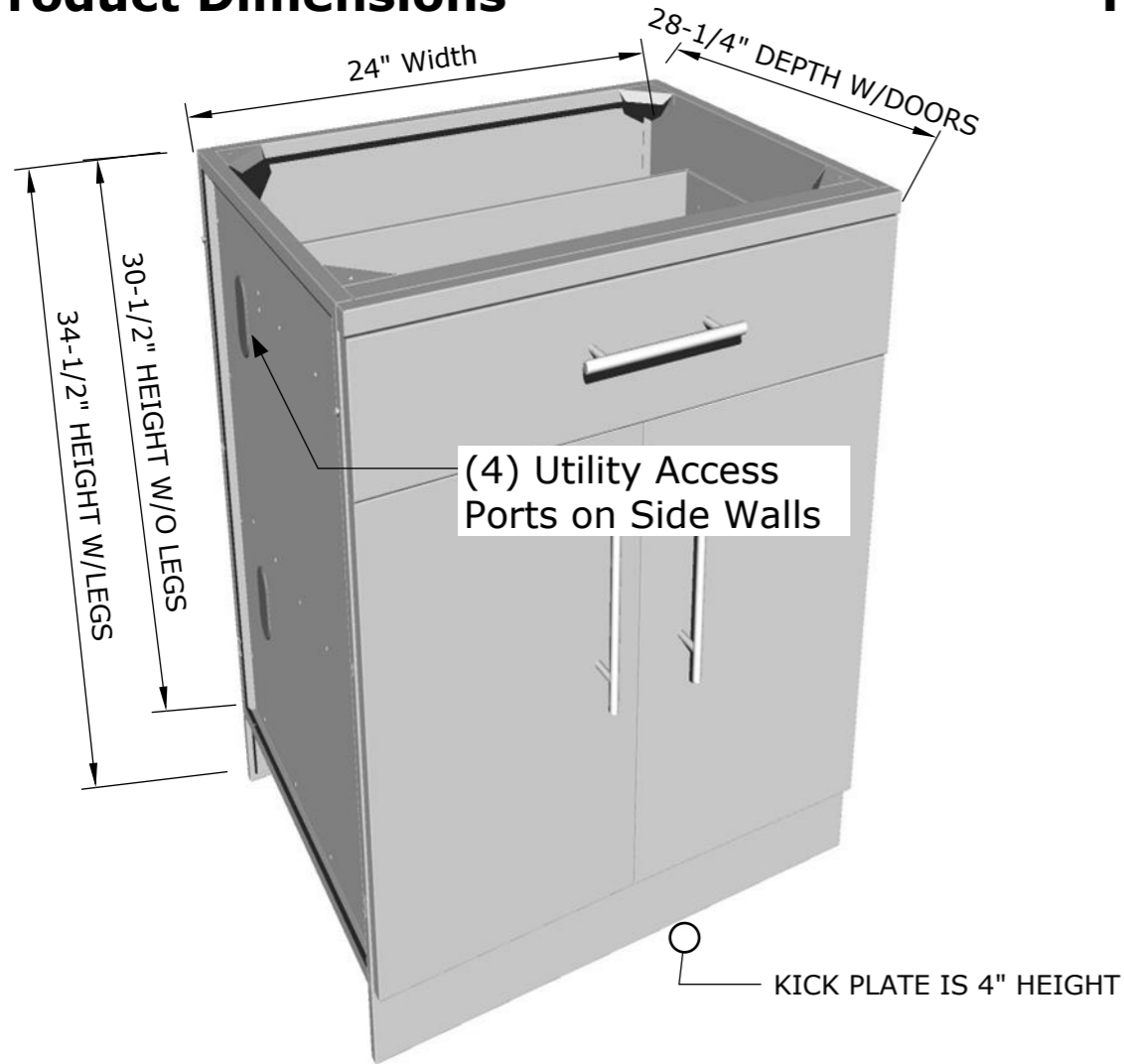
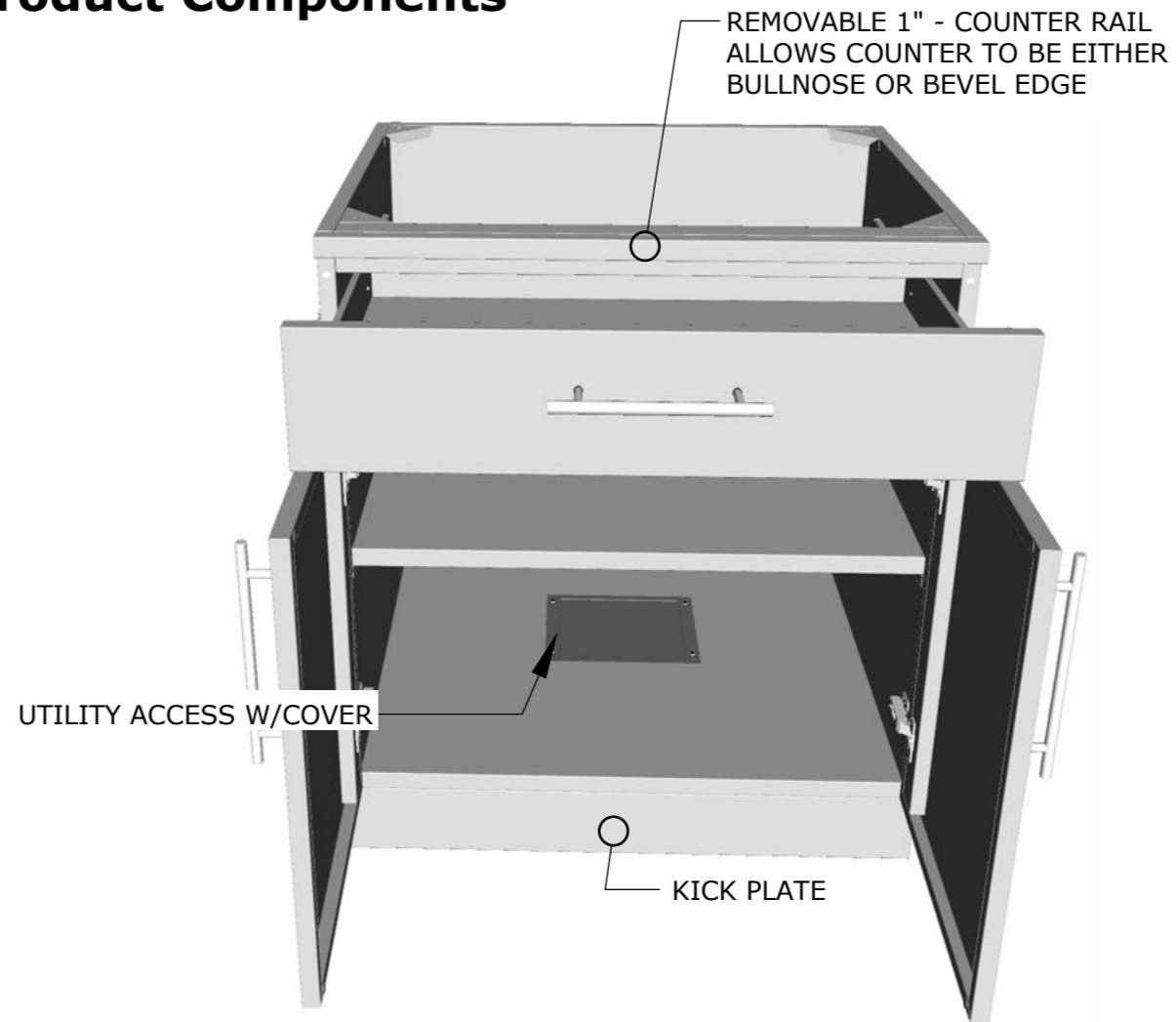


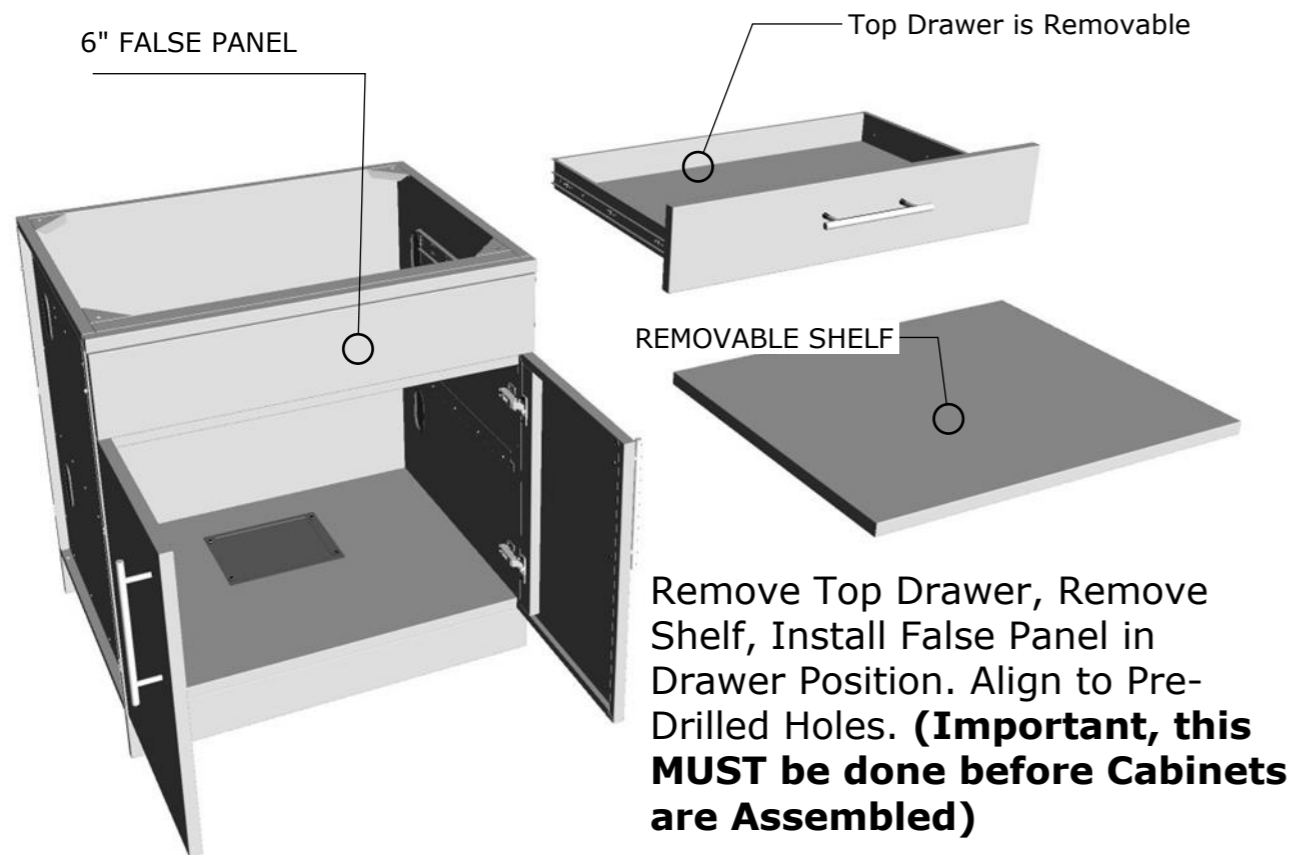
Product Dimensions



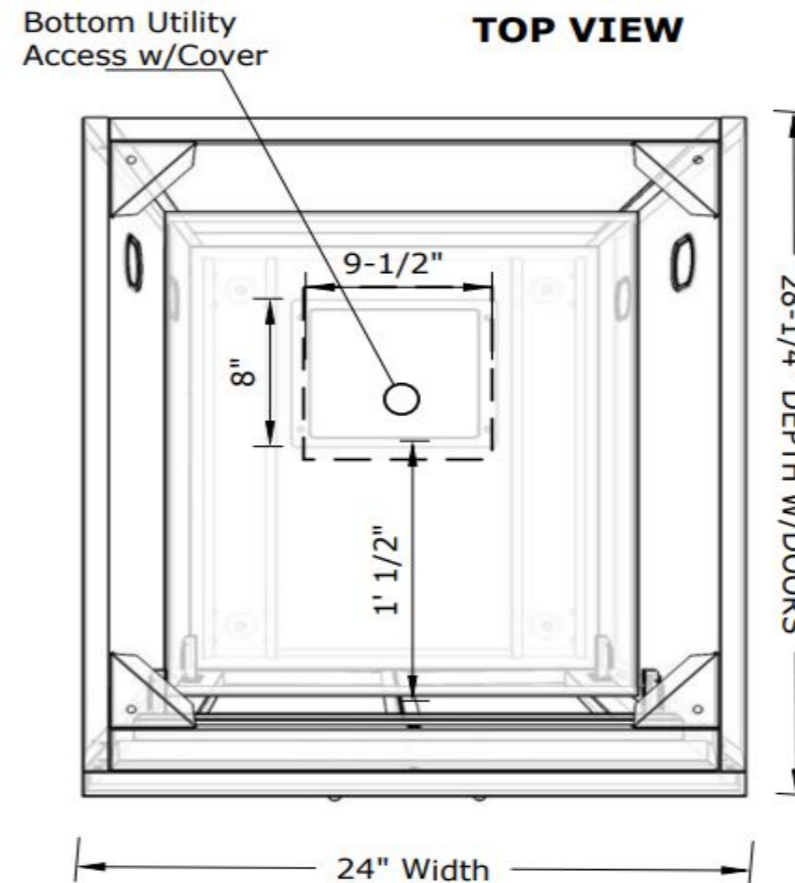
Product Components



Cabinet Conversion for Drop-In Appliance



TOP VIEW



SUNSTONE METAL PRODUCTS
16004 CENTRAL COMMERCE DR.
PFLUGERVILLE, TEXAS 78660
Tel: 888.934.9449
Bus: 512.487.5116
Fax: 512.487.7016

PRODUCT

24" Double Door Cabinet
w/Shelf, Drawer & False
Top Panel Option
Item No. SBC24CDD

DESCRIPTION

24" Double Door Cabinet with
Shelf and False Top Panel.
Remove Shelf for Sink Installation.

- Lifetime Structure Warranty
- 304 Stainless Steel Structure
- 304 SS Rod Handles
- Front & Back Kick-Plates
- Easy Pin-Lock Installation
- Soft-Close Drawer Tracks
- Covered Access Ports
- Adjustable Peg-Legs
- Optional Wheel Casters

INCLUDED COMPONENTS

- Front Kick Plates
- Back Solid Kick Plate
- (4) Adjustable Peg Legs
- Center Shelf

PRODUCT DIMENSIONS

24"W x 28-1/4"D
(w/Doors) x 34-1/2"H
(w/Legs) or 30-1/2"H (no
Legs) or Upto 36" Max
Adjustable Height

INSERT DIMENSIONS

22"Width x 18"Depth

INSERTABLE PRODUCTS

Single Side Burner - 1SSB
Premium Sink - B-PS21
Standard Sink - A-SS17

MATERIAL SPECS

304 Stainless Steel entire
structure, 18 Gauge for Door
Panel, 18 Gauge for Cabinet
Box, 18 Gauge for Shelf,
Handles are made of Solid 304
Stainless Steel Bar.