

TUCH MODELS

TUCH3618 | TUCH4818

USE & CARE MANUAL

THOR
K I T C H E N®


USE & CARE MANUAL

THOR KITCHEN TUCH SERIES PROFESSIONAL RANGE HOODS

TUCH MODELS

TUCH3618 | TUCH4818

THOR
K I T C H E N®



Thank you for choosing THOR KITCHEN. This product has been manufactured by Thor International, 4651 E Airport Drive, Ontario, CA 91761. This manual contains all the information you will need to install / use the product correctly and safely. Please read all the instructions prior using the product, and keep this manual in a secure place for future reference. Do not remove the attached adhesive identification label containing code, model number, manufacturer and other information from the product. This label will be used by the THOR KITCHEN authorized service representative in the event that your product needs servicing.

Nous vous remercions d'avoir choisi THOR KITCHEN. Ce produit a été fabriqué par Thor International, 4651 E Airport Drive, Ontario, CA 91761. Ce manuel contient l'intégralité des consignes dont vous aurez besoin pour installer / utiliser le produit correctement et en toute sécurité. Veuillez lire l'intégralité des consignes avant toute utilisation du produit, puis conservez le présent manuel en lieu sûr afin de pouvoir vous y reporter ultérieurement. Ne pas retirer du produit l'étiquette d'identification adhésive qui contient le code, le numéro de modèle, le nom du fabricant et toute autre information. Ladite étiquette sera utilisée par le représentant du service après-vente agréé de THOR KITCHEN au cas où votre produit nécessiterait réparation ou entretien.

Gracias por elegir a THOR KITCHEN. Este producto fue fabricado por Thor International, 4651 E Airport Drive, Ontario, CA 91761. Este manual contiene toda la información que necesitará para instalar / usar el producto de manera adecuada y segura. Lea todas las instrucciones antes de usar el producto, y mantenga este manual en un lugar seguro para usarlo como referencia a futuro. No quite la etiqueta de identificación adhesiva que contiene el código, número de modelo, fabricante y otros datos del producto. El representante de servicio autorizado por THOR KITCHEN usará esta etiqueta en caso de que su producto requiera reparaciones.

TABLE OF CONTENTS

IMPORTANT SAFETY NOTICE	5
1.1 Read and Save These Instructions.....	5
1.2 Electrical Requirements	7
PRODUCT FEATURES / SPECIFICATION CHART	7
2.1 Product Features	7
2.2 Specification Chart.....	8
2.3 Circuit Diagram.....	8
2.4 Hood Specifications	9
EXPLODED DIAGRAM	10
LIST OF MATERIALS	11
3.1 Parts Supplied.....	11
3.2 Optional Accessories	11
INSTALLATION GUIDELINES	12
4.1 Location	12
4.2 Exhaust Duct	12
4.3 Position.....	13
OPERATING INSTRUCTIONS	14
BAFFLE FILTER INSTALLATION, REMOVAL AND MAINTENANCE	16
REPLACING LIGHT STRIP	17
SURFACE MAINTENANCE	20
5.1 Surface Maintenance.....	20
5.2 Surface Cleaning and Maintenance.....	20
CAUTIONS	20
6.1 Special Attention when Using the Range Hood	20
TROUBLESHOOTING	21
WARRANTY	22

IMPORTANT SAFETY NOTICE

1.1 Read and Save These Instructions

⚠ WARNING

To reduce the risk of fire or electric shock, do not use this fan with any solid-state control device.

CAUTION

For general ventilating use only. Do not use to exhaust hazardous or explosive materials and vapors.

⚠ WARNING

To reduce the risk of fire, electric shock, or injury to persons, observe the following:

- a. Use this unit only in the manner intended by the manufacturer. If you have questions, contact the manufacturer.
- b. Before servicing or cleaning the unit, turn off the power at the service panel and lock the service disconnect to prevent accidental power activation. If locking the disconnect is not possible, securely attach a prominent warning device, such as a tag, to the service panel.

⚠ WARNING

To reduce the risk of a range top grease fire:

- a. Never leave surface units unattended at high settings. Boilovers cause smoking and greasy spillovers that may ignite. Heat oils slowly on low or medium settings.
- b. Always turn the hood ON when cooking at high heat or when flambeing food (i.e. Crepes Suzette, Cherries Jubilee, Peppercorn Beef Flambe).
- c. Clean ventilating fans frequently. Grease should not be allowed to accumulate on fan or filter.
- d. Use proper pan sizes. Always use cookware appropriate for the size of the surface element.

⚠ WARNING

To reduce the risk of injury to persons in the event of a range top grease fire, observe the following*:

- a. SMOTHER FLAMES with a close-fitting lid, cookie sheet, or metal tray, then turn off the burner. BE CAREFUL TO PREVENT BURNS. If the flames do not go out immediately, EVACUATE AND CALL THE FIRE DEPARTMENT.
- b. NEVER PICK UP A FLAMING PAN - You may be burned.
- c. DO NOT USE WATER, including wet dishcloths or towels - a violent steam explosion will result.
- d. Use an extinguisher ONLY if:
 1. You know you have a Class ABC extinguisher, and you already know how to operate it.
 2. The fire is small and contained in the area where it started.
 3. The fire department is being called.
 4. You can fight the fire with your back to an exit.

* Based on "Kitchen Fire Safety Tips" published by NFPA

IMPORTANT SAFETY NOTICE

⚠ WARNING

To reduce the risk of fire, electric shock, or injury to persons, observe the following:

- a. Installation work and electrical wiring must be done by qualified person(s) in accordance with all applicable codes and standards, including fire-rated construction.
- b. Sufficient air is needed for proper combustion and exhausting of gases through the flue (chimney) of fuel burning equipment to prevent back drafting. Follow the heating equipment manufacturer's guideline and safety standards such as those published by the National Fire Protection Association (NFPA), and the American Society for Heating, Refrigeration and Air Conditioning Engineers (ASHRAE), and the local code authorities.
- c. When cutting or drilling into wall or ceiling, do not damage electrical wiring and other hidden utilities.
- d. Ducted fans must always be vented to the outdoors.
- e. NEVER place a switch where it can be reached from a tub or shower.
- f. Make sure the power is off before installing, wiring or maintaining

To Reduce The Risk Of Fire, Electric Shock Or Injury To Persons, Do Not Use Replacement Parts That Have Not Been Recommended By The Manufacturer (e.g. Parts Made At Home Using A 3D Printer).

⚠ WARNING

To reduce the risk of fire, use only metal ductwork.

CAUTION

To reduce risk of fire and to properly exhaust air outside - Do not vent exhaust air into spaces within walls, ceilings, attics, crawl spaces or garages

⚠ WARNING

GROUNDING INSTRUCTIONS

This appliance must be grounded. In the event of an electrical short circuit, grounding reduces the risk of electric shock by providing an escape wire for the electric current. This appliance is equipped with a cord having a grounding wire with a grounding plug. The plug must be plugged into an outlet that is properly installed and grounded.

WARNING - Improper grounding can result in a risk of electric shock.

Consult a qualified electrician if the grounding instructions are not completely understood, or if doubt exists as to whether the appliance is properly grounded.

Do not use an extension cord. If the power supply cord is too short, have a qualified electrician install an outlet near the appliance.

OPERATION

Always leave safety grilles and filters in place. Without these components, operating blowers could catch onto hair, fingers and loose clothing. The manufacturer declines all responsibility in the event of failure to observe the instructions given here for installation, maintenance and suitable use of the product. The manufacturer further declines all responsibility for injury due to negligence and the warranty of the unit automatically expires due to improper maintenance.

CALIFORNIA PROPOSITION 65 WARNING

⚠ WARNING

This appliance contains chemicals known to the State of California to cause cancer and/or reproductive harm, and birth defects or other reproductive harm. For more information go to www.P65Warnings.ca.gov.

IMPORTANT SAFETY NOTICE

1.2 Electrical Requirements

Important: Observe all governing codes and ordinances.

It is the customer's responsibility:

- To contact a qualified electrical installer.
- To assure that the electrical installation is adequate and in conformance with National Electrical Code, ANSI/NFPA 70 latest edition* or CSA standards C22.1-94, Canadian Electrical Code, Part 1 and C22.2 No.0-M91 - latest edition** and all local codes and ordinances.

* National Fire Protection Association Batterymarch Park, Quincy, Massachusetts 02269

** CSA International 8501 East Pleasant Valley Road, Cleveland, Ohio 44131-5575

If codes permit and a separate ground wire is used, it is recommended that a qualified electrician determine that the ground path is adequate.

Do not ground to a gas pipe.

Check with a qualified electrician if you are not sure the range hood is properly grounded.

Do not have a fuse in the neutral or ground circuit.

This appliance requires a 120V / 60Hz electrical supply and connected to an individual properly grounded branch circuit protected by a 15 or 20 ampere circuit breaker or time delay fuse. Wiring must be 2 wire with ground. Please also refer to Electrical Diagram on product.

A cable locking connector (not supplied) might also be required by local codes.

Check with local requirements, purchase and install appropriate connector if necessary.


PRODUCT FEATURES / SPECIFICATION CHART

2.1 Product Features

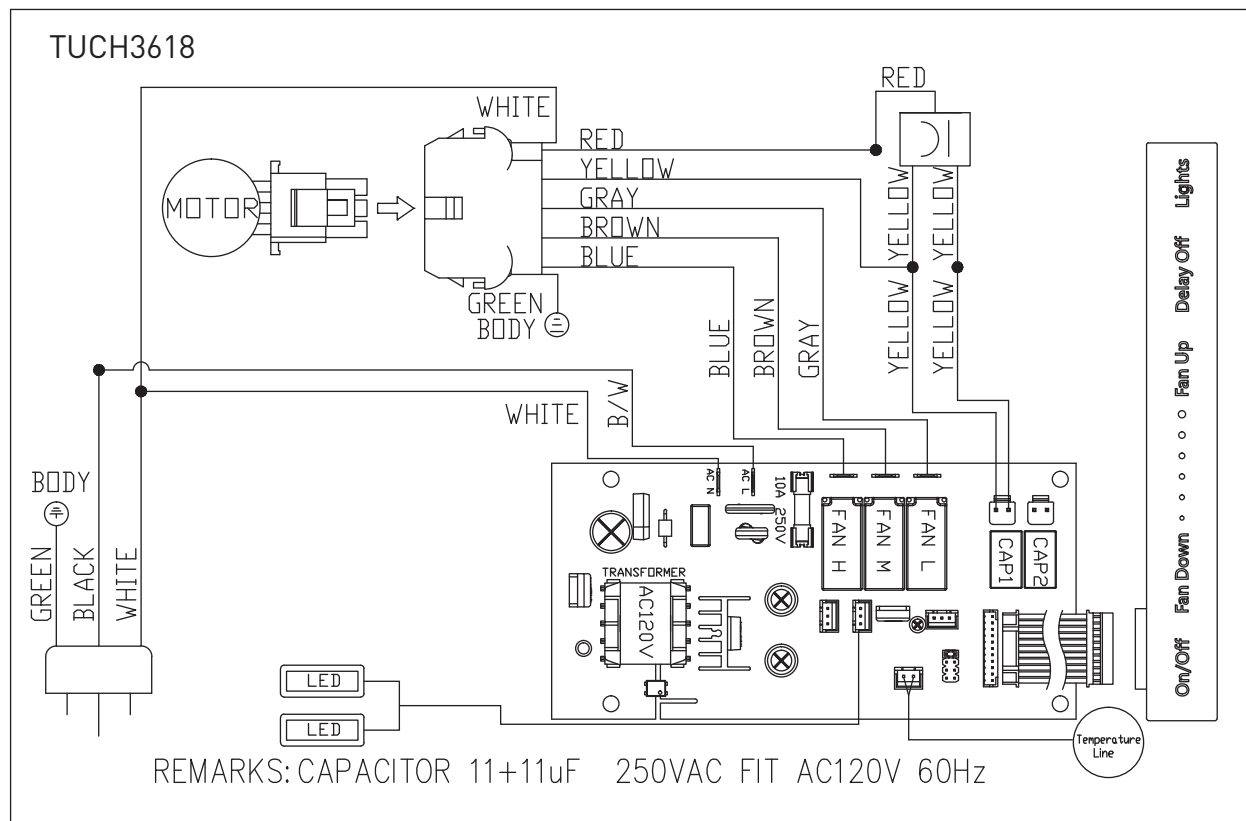
1. 6-speed options.
2. Dual level lighting: Bright, Dim and Off.
3. Gesture control function: Turn On and Off, adjust the fan speed.
4. Heat sensor: Automatically detect temperature and turn on and off the hood.

PRODUCT FEATURES / SPECIFICATION CHART

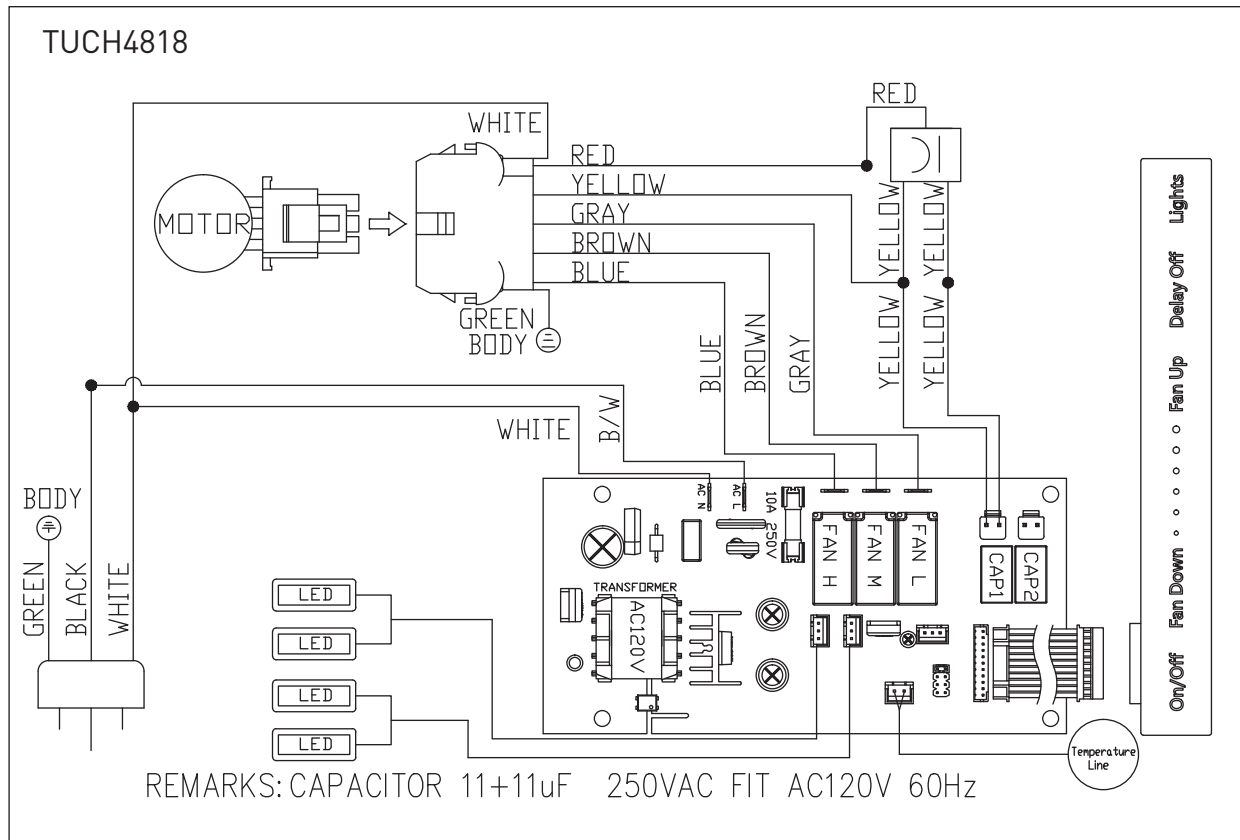
2.2 Specification Chart

Models	TUCH3618 / TUCH4818
Net Weight (lbs)	56.2lbs / 67.2lbs
Product Dimension (inches)	(W)35-7/8 x (D)24" x (H)18" (W)47-7/8 x (D)24" x (H)18"
Cutout Dimension (inches)	[W]10" x [D]11"
Maximum Voltage	120V – 60Hz
Exhaust Pipe Diameter	Round 8 inches
Light	6W LED x2 for 36", x4 for 48"
Certification	

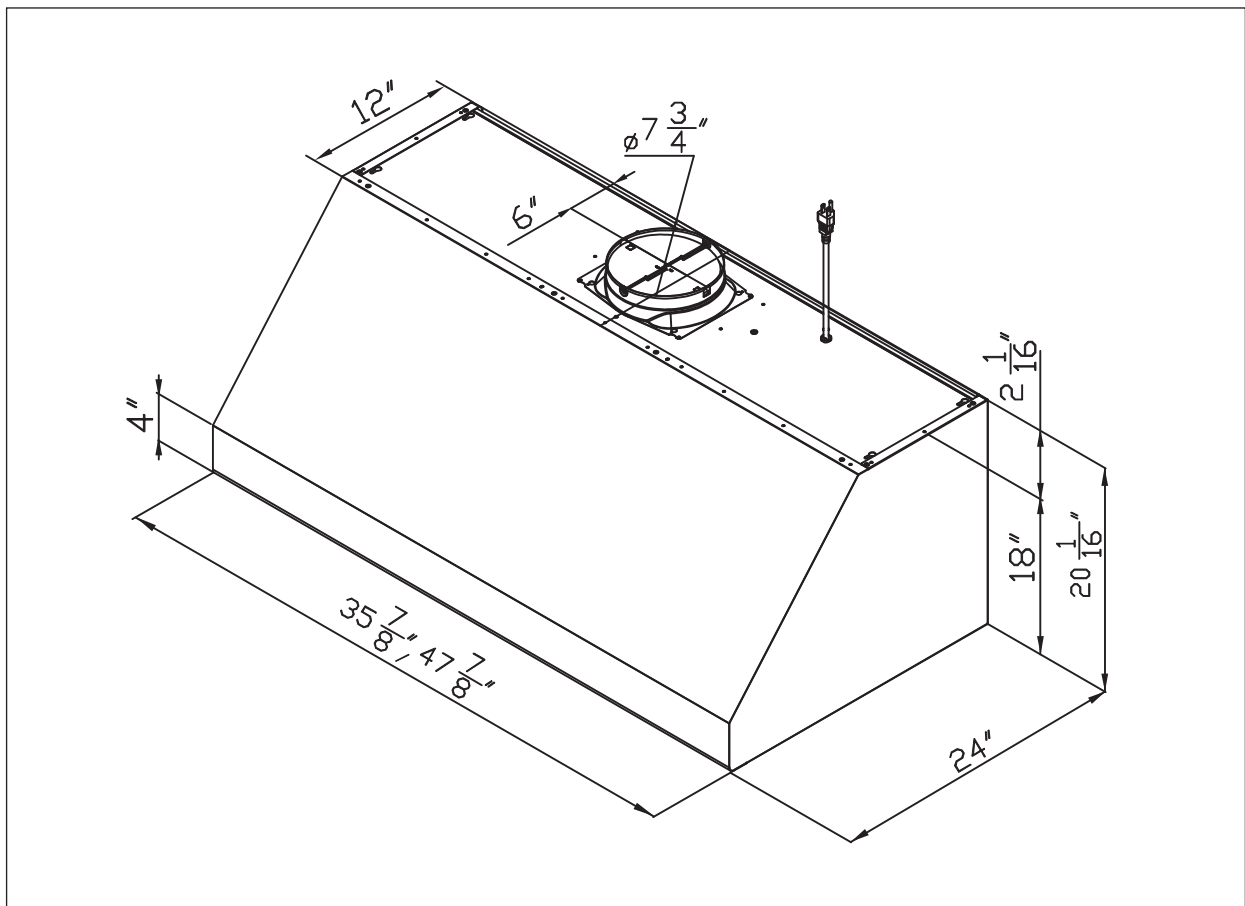
2.3 Circuit Diagram



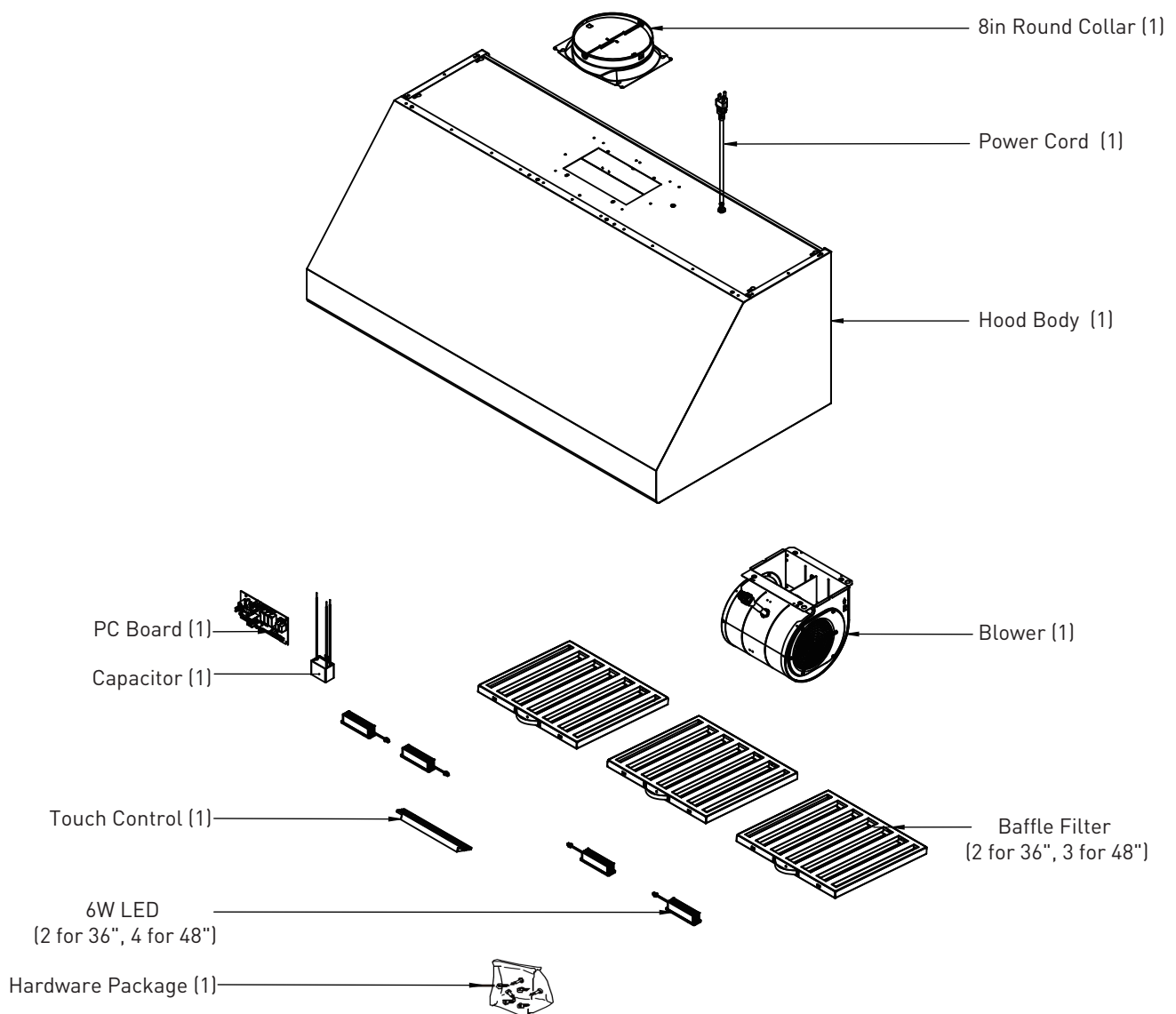
PRODUCT FEATURES / SPECIFICATION CHART



2.4 Hood Specifications

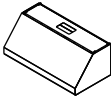
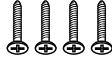

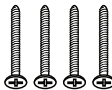

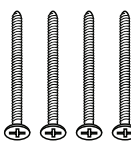

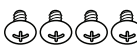


EXPLODED DIAGRAM



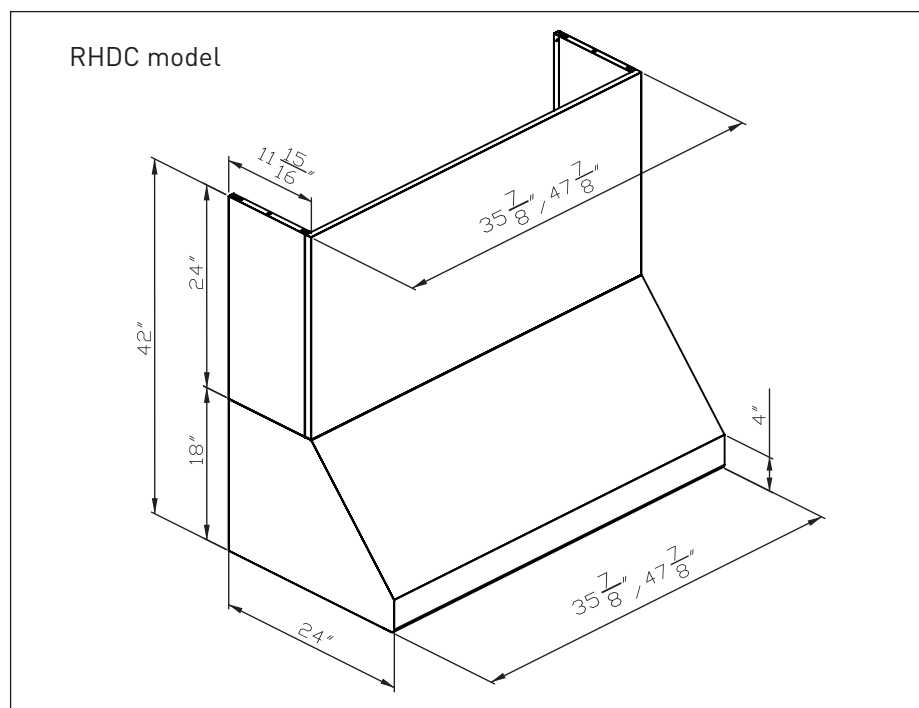
LIST OF MATERIALS

3.1 Parts Supplied

Standard configuration			Hardware package content		
Hood		1	#6 x 1" Wood Screw		4
User Manual		1	#6 x 1-1/2" Wood Screw		4
8" round Duct Collar		1	#6 x 2" Wood Screw		4
Hardware Package		1			
			M4 x 8mm Truss Head Screw		4

3.2 Optional Accessories

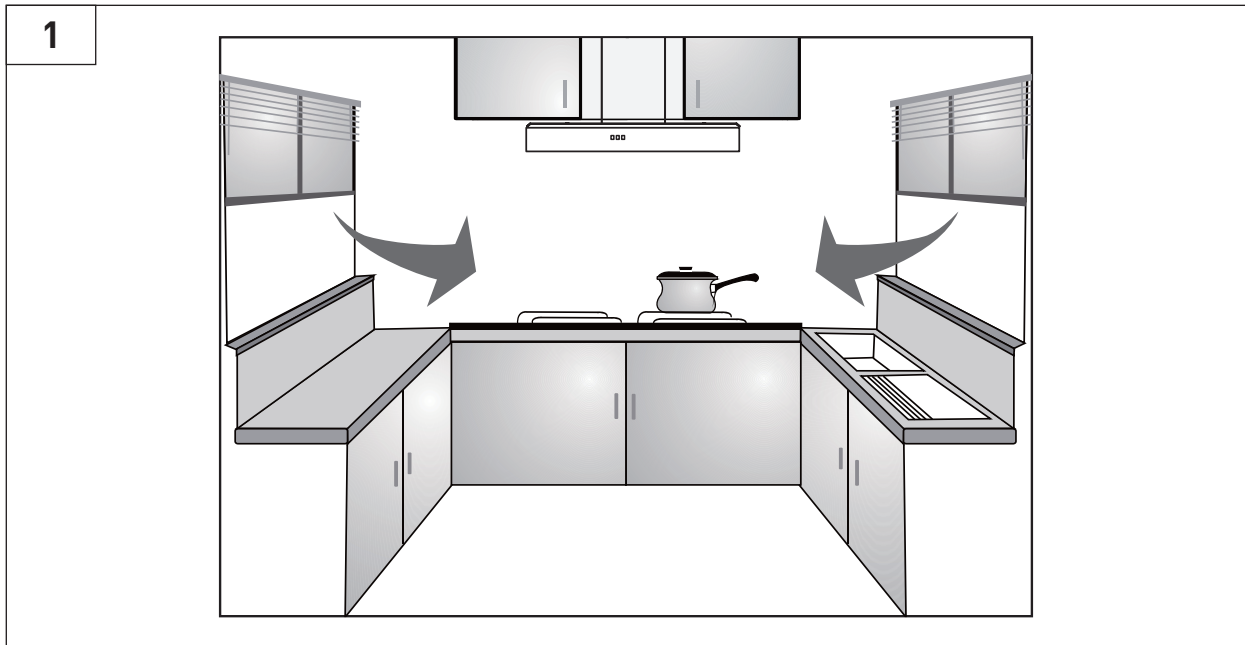
Description		Part Number
24-inch Height Duct Cover	36"	RHDC36TU24
	48"	RHDC48TU24
Recirculating Kit	36"	TRC3618
	48"	TRC4818
Charcoal Filter		FT3648TU



INSTALLATION GUIDELINES

4.1 Location

- Air turbulence from window/door may reduce the effectiveness of hood. It is suggested to close window/door before using hood. (**FIG. 1**)
- The smoke has to rise up to 10 inches from cook top in order to reach hood's suction efficiency range.



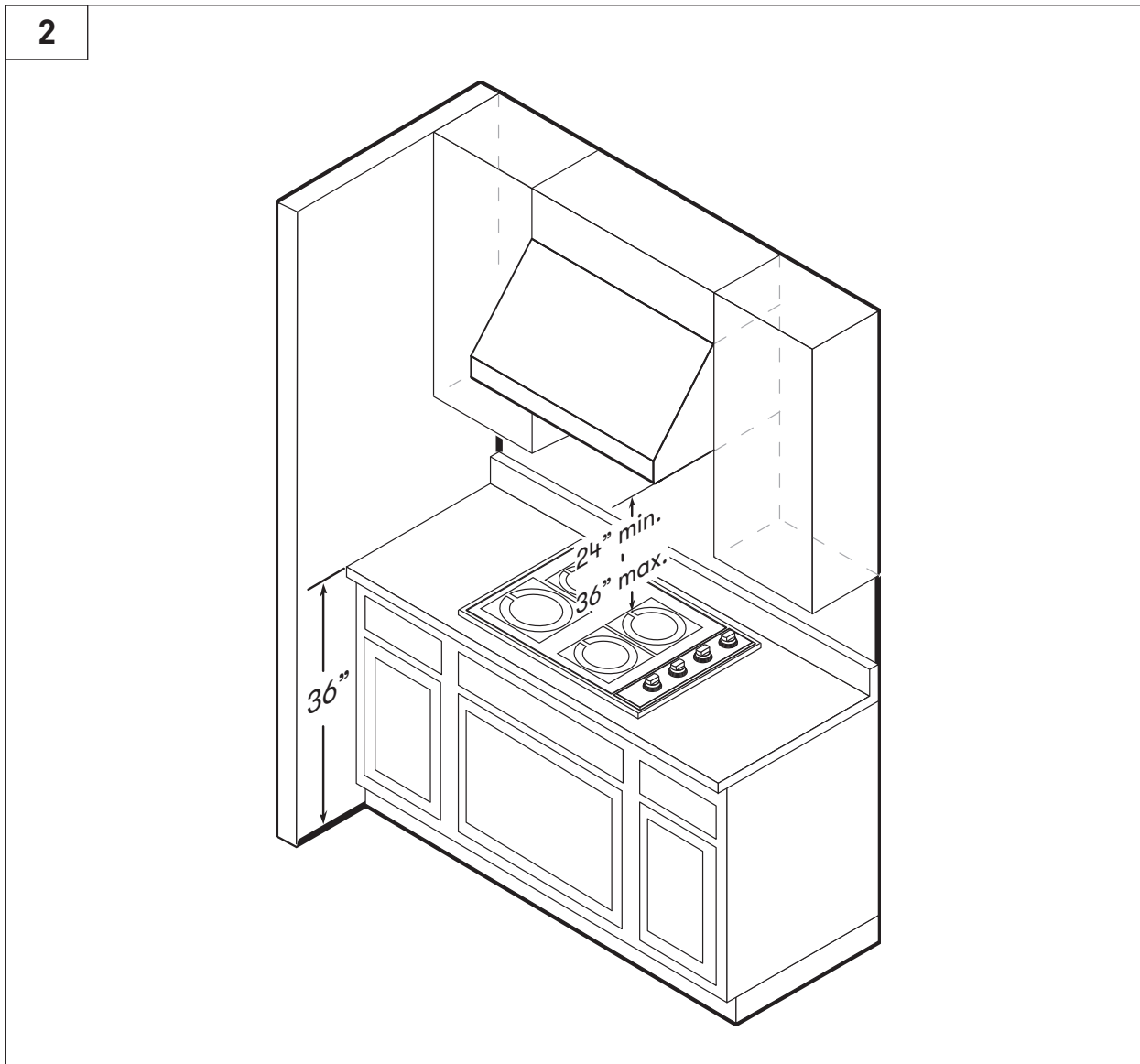
4.2 Exhaust Duct

- 8" diameter exhaust duct is recommended to use in order to maximize suction efficiency reduce gap.
- Before installing the range hood, securely attach the **duct collar** to the vent opening on the top of the range hood using heat-resistant metal tape.
- Once the duct collar is in place, connect the exhaust duct to the collar and seal all joints with heat-resistant metal tape to ensure a tight, secure fit.

INSTALLATION GUIDELINES

4.3 Position

- The installation height is measured vertically from the center of the hood's baffle filter to the surface of the cooktop.
- The min height is 24 inches and the max installation height is 36 inches for gas hob. (**FIG. 2**)
- Avoid left-right or front-dropped inclination.



OPERATING INSTRUCTIONS

On / Off Fan Down • • • • • Fan Up Delay Off Lights

WARNING

When the sensor encounters heavy smoke or is obscured by an object, there is a chance to activate the gesture function to automatically turn on the hood.

Gesture Control Operation

When the Fan is On

- Increase Fan Speed: Wave your hand from left to right in front of the control panel to increase the fan speed.
- Decrease Fan Speed: Wave your hand from right to left to decrease the fan speed.
- Turn Off the Hood: When the fan is set to speed 1, swiping your hand from right to left will turn off both the fan and the lights.

When the Fan is Off

- Wave your hand in front of the control panel from left to right, the hood will turn on at speed 1.
- When turning off the fan, there is no action when swiping to the left.
- The hood has a memory function to remember the last used settings for the fan and lights.

NOTICE

- The distance between hand and the sensor should be no more than 4 inches.
- The sensors are located at the right and left of the control panel.

Heat Sensor

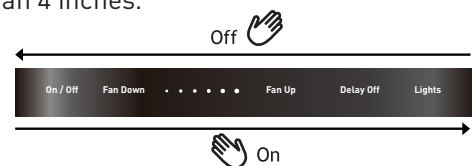
This hood is equipped with a Heat Sensor.

- Automatic Fan Activation: When the hood is turned off, the fan will automatically start at speed 3, if the heat sensor detects a temperature exceeding 55°C (131°F) above the cooking surface. The fan will turn off automatically when the temperature drops to 40°C (104°F).
- Temporary Sensor Disable: If the heat sensor detects a temperature exceeding 55°C (131°F) while the hood is off, and you adjust the fan speed or use the delay-off function, the sensor will be temporarily disabled for 20 minutes. After this period, the sensor will reactivate and resume monitoring.

NOTICE The heat sensor will be disabled when you press the fan up/down buttons or the delay off button.

1. Power Control

- Power On/Off: Press the button to turn the entire hood (fan and lights) on or off.
- Memory Function: The hood will remember the last fan speed and light level set before it was turned off.



OPERATING INSTRUCTIONS

Control Panel Lock Function

- Activate the control panel lock function

With the hood turned off, press and hold the On/Off button for 3 seconds to activate the control panel lock function. All fan speed indicators will light up.

- Deactivate the control panel lock function

To deactivate the control panel lock function, press and hold the On/Off button for 3 seconds. All fan speed indicators will turn off.

NOTICE When the control panel lock function is activated, all buttons on the control panel, including gesture functions, will be disabled. This feature is intended for use during surface cleaning to prevent accidental activation of the hood.

2. Speed Selection Button

Fan Down

- Press to decrease fan speed from 6, 5, 4, 3, 2, 1, off.

Fan Up

- Press to increase fan speed from 1, 2, 3, 4, 5, 6.

3. Delay Off

- While the fan is running, press and hold the Delay Off button for 2 seconds to activate the Delay Off function. All fan speed LED indicators will blink slowly.
- In this mode, use the Fan Down or Fan Up button to set the delay time between 2 to 12 minutes (default is 2 minutes).
- The selected delay time is represented by the blinking fan speed LED indicator. For example, selecting 2 = slow blink of fan speed 1.
- The Delay Off timer will automatically confirm the setting if no adjustments are made within 5 seconds.
- During the Delay Off countdown, the fan will switch to speed 1. You can change the fan speed using the gesture control or by pressing the Fan Down or Fan Up button.
- After the timer expires, the fan and lights will power off.

NOTICE When the Delay Off function is operating, press the Delay Off button to disable the Delay Off function, pressing On/Off button will turn off the entire hood and Delay Off function.

4. Lights

- Press to change lighting level from Low, High, Off.

OPERATING INSTRUCTIONS

5. Filter Cleaning Reminder

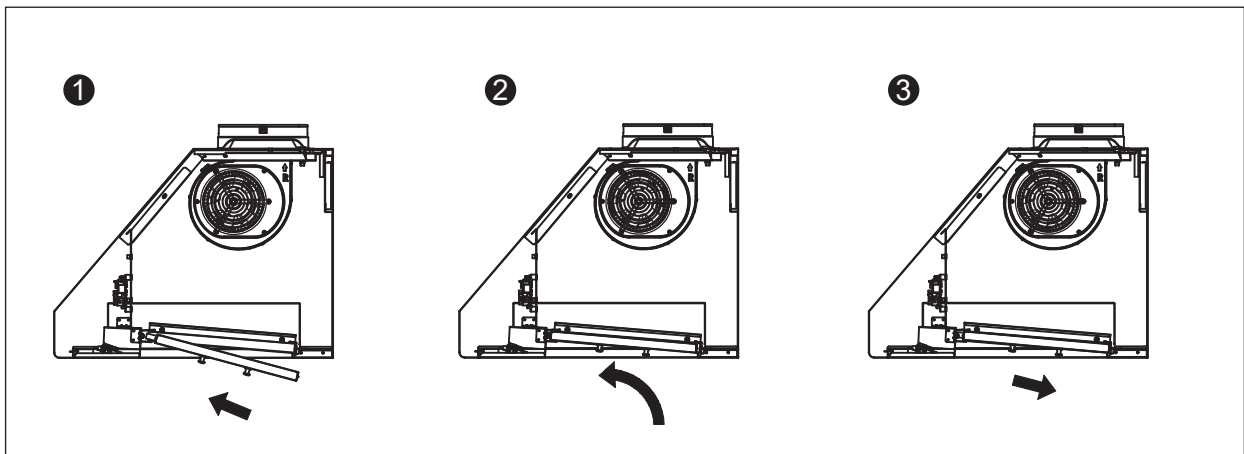
- After 30 hours of fan operation, the fan speed LED indicators will flash slowly to indicate that the filters require cleaning.
- Press and hold the Lights button for 3 seconds to clear the symbol after the filter has been cleaned.

NOTICE The fan speed LED indicator will continue blinking after the fan is turned off until the Lights button is pressed and held for 3 seconds to clear the reminder.

BAFFLE FILTER INSTALLATION, REMOVAL AND MAINTENANCE

Installing the Baffle Filters

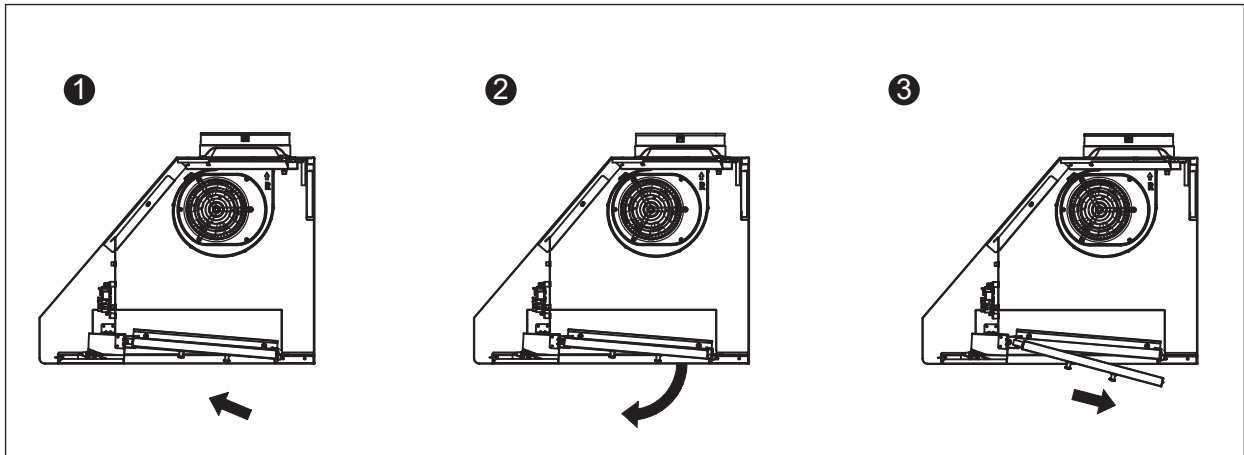
1. Insert the filter into the top groove of the liner, ensuring it is properly aligned. Pull the filter towards the front of the liner using the handles.
2. Tilt the back of the filter upward so it is angled within the liner.
3. Slide the back of the filter into the channel at the rear of the liner to securely lock it in place.



BAFFLE FILTER INSTALLATION, REMOVAL AND MAINTENANCE

Removing the Baffle Filters

1. Pull the filter toward the front of the liner.
2. Pivot the rear of the filter downward.
3. Slide the filter out of the channel at the front of the liner to remove it.



Cleaning the Baffle Filters

The filters are designed to capture grease and cooking residue. While they generally do not require replacement, they should be cleaned every 30 days, or more frequently depending on usage.

Filters can be cleaned either in the dishwasher on a low-heat setting or by soaking them in hot, soapy water. Ensure the filters are thoroughly dried before reinstalling them into the hood.

REPLACING LIGHT STRIP

LED Light:

For LED light strip replacement or service, please contact Thor Kitchen customer service or parts department at (877) 288 - 8099.

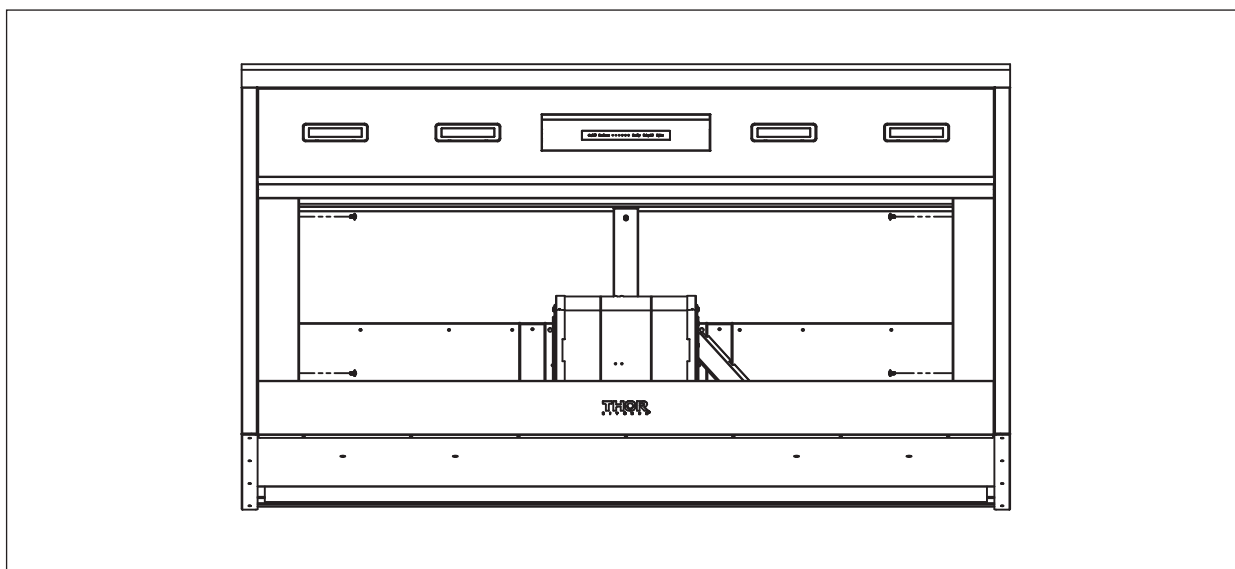
⚠ WARNING

Improper installation, service, or maintenance may cause injury or damage. Refer to this manual for detailed instructions. All other service should be performed by an authorized service provider.

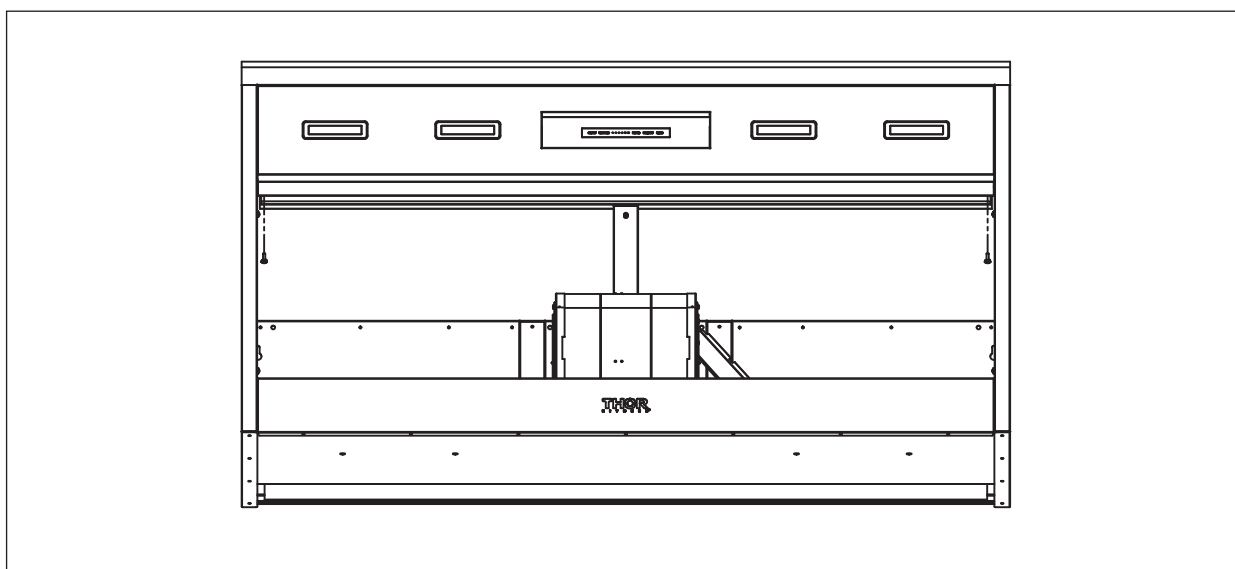
Failure to follow these instructions can result in serious injury, fire, or electrical shock.

1. After turning off the power, remove baffle filters.
2. To remove the side panel, remove the two screws on both sides (as shown in the figure below).

REPLACING LIGHT STRIP

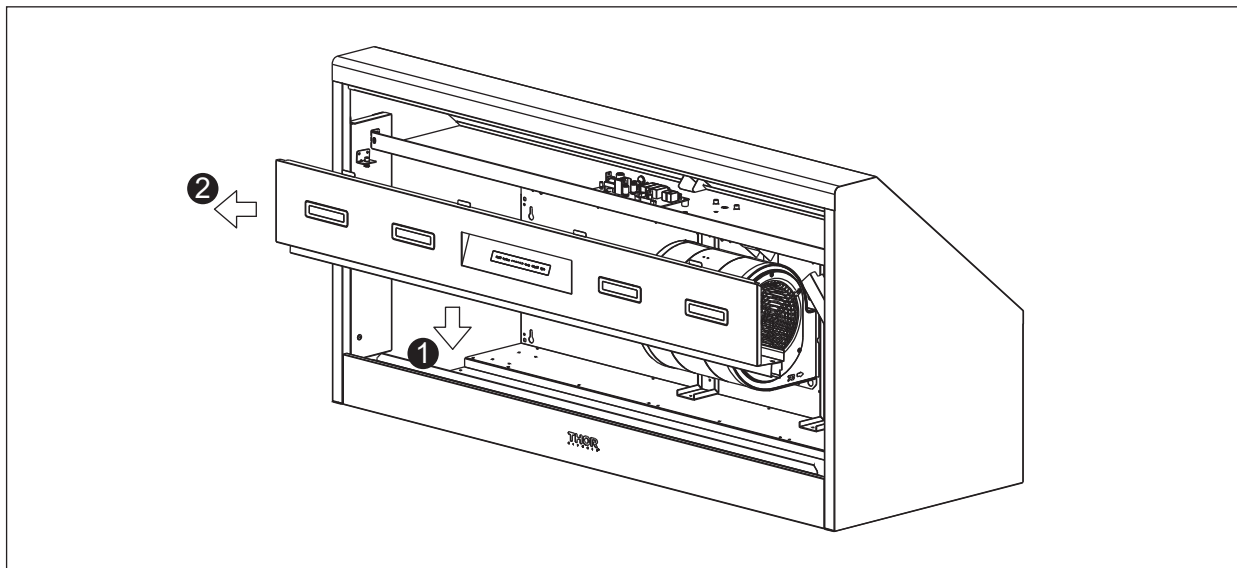


3. To remove the light panel, remove the two screws on both sides (as shown in the figure below).

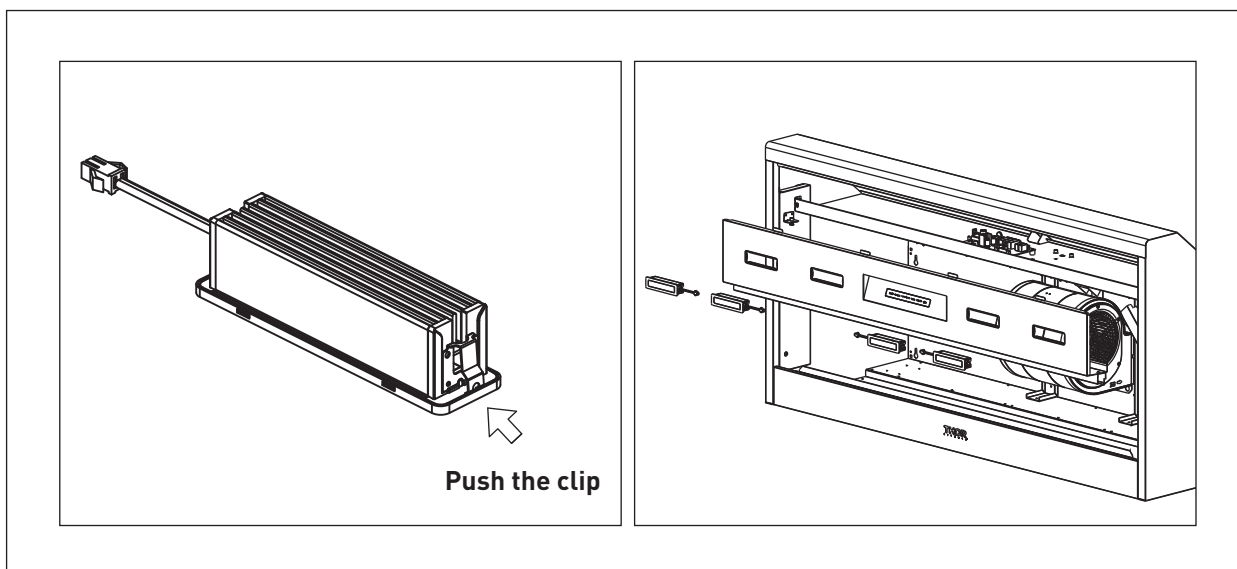


REPLACING LIGHT STRIP

4. In order to remove the light panel, press the light panel down and then pull it forward to remove.



5. Disconnect the LED light quick connector.
6. Simultaneously press the clips on both sides of the LED light strip and gently remove it.



SURFACE MAINTENANCE

5.1 Surface Maintenance

1. Please clean the range hood surface regularly with warm soapy water and wipe with a cotton cloth to prevent grease from accumulating.
2. Please do not use harsh cleansers or coarse material to clean the surface because that will damage the surface.
3. A non-invasive stainless steel polish is recommended to polish the surface after cleaning.
4. Please use soft material for polishing because it will make your range hood surface shinier.
5. Please do not use cleaning solutions that have bleach as an ingredient.

5.2 Surface Cleaning and Maintenance

1. Always disconnect from power supply before cleaning.
2. Clean both the exterior and interior of the hood regularly to ensure durability. Avoid using abrasive cleaners.
3. Make a habit of turning on the hood first before turning on the stove to avoid high temperature in the kitchen.

CAUTIONS

6.1 Special Attention when Using the Range Hood

- The range hood must be turned on every time before cooking to ensure maximum ventilation effect.
- If there is damage to the power cord, removing and changing the power cord must be handled by the manufacturer, installer or a qualified electrician.
- When the range hood, gas stove, or other fuel appliances are being used simultaneously, there must be good ventilation in the kitchen.
- Failure to clean the range hood according to the instructions in the manual may result in a fire hazard.
- Do not light a fire directly under the range hood
- The exhaust gas from the range hood can't be fed into the exhaust channel of the gas stove or any other appliances.
- The minimum distance required between the top of the stove and the bottom of the range hood is 24 inches. If the range installation manual states that more distance are required, it must be taken into consideration. Adjust range hood to appropriate height for complete emission of exhaust
- To avoid injury or damage, all components of the range hood must be disassembled using appropriate tools. Do not attempt to disassemble any parts with bare hands.

TROUBLESHOOTING

Problem	Possible cause	Solution
Motor stops running	• No power (burned wire) or burned fuse.	• Replace the PC board.
		• Check power meter (replace power cord).
	• Motor temperature regulator is off and can't be recovered.	• Replace motor.
	• Motor copper wire is burned.	• Replace motor.
Motor speed slows down automatically	• Defective capacitor.	• Replace capacitor.
	• Distorted capacitor or low power.	• Replace capacitor.
Inverted fan blades	• Defective motor.	• Replace motor.
	• Short circuit on the motor.	• Replace motor.
Motor doesn't regulate speed	• Air comes out of the air outlet instead of being sucked up.	• Air outlet or exhaust pipe is blocked and needs cleaning.
	• Defective capacitor.	• Replace capacitor.
Motor runs on and off	• Electrical wiring is off.	• Fix the electrical wires.
	• Motor stops running when it reaches unusually high temperature, and starts again when it cools down to normal cooking temperature. This is caused by temperature running too high during cooking.	• Recommend changing your cooking routine slightly.
Two sections of the LED light not working		• Replace motor.
	• LED light failed.	• Replace LED light.

WARRANTY



Warranty & Service

This product has been manufactured by Thor International, 4651 E Airport Drive, Ontario, CA 91761

For Customer Service, please call (877) 288 - 8099

For the most up to date warranty and service policy, please refer to our website

WWW.THORKITCHEN.COM/WARRANTY-REGISTRATION

For in-warranty service requests, please visit our website at

WWW.THORKITCHEN.COM/SERVICE

Please Note: You must provide proof of purchase or installation date for any in-warranty service requests.

WELCOME TO THE CLUB

You chose THOR Kitchen to enhance your culinary journey and we're stoked to have you in the club. Think of it as a secret society of really savvy people, such as yourself, choosing professional power and performance at an affordable price.



Register your product by following the steps below.

WARRANTY REGISTRATION



Scan the QR code or visit
thorkitchen.com/warranty



Input your product info
and select register



You're done.
Let's get cookin'.

WARRANTY



NEED PARTS?

