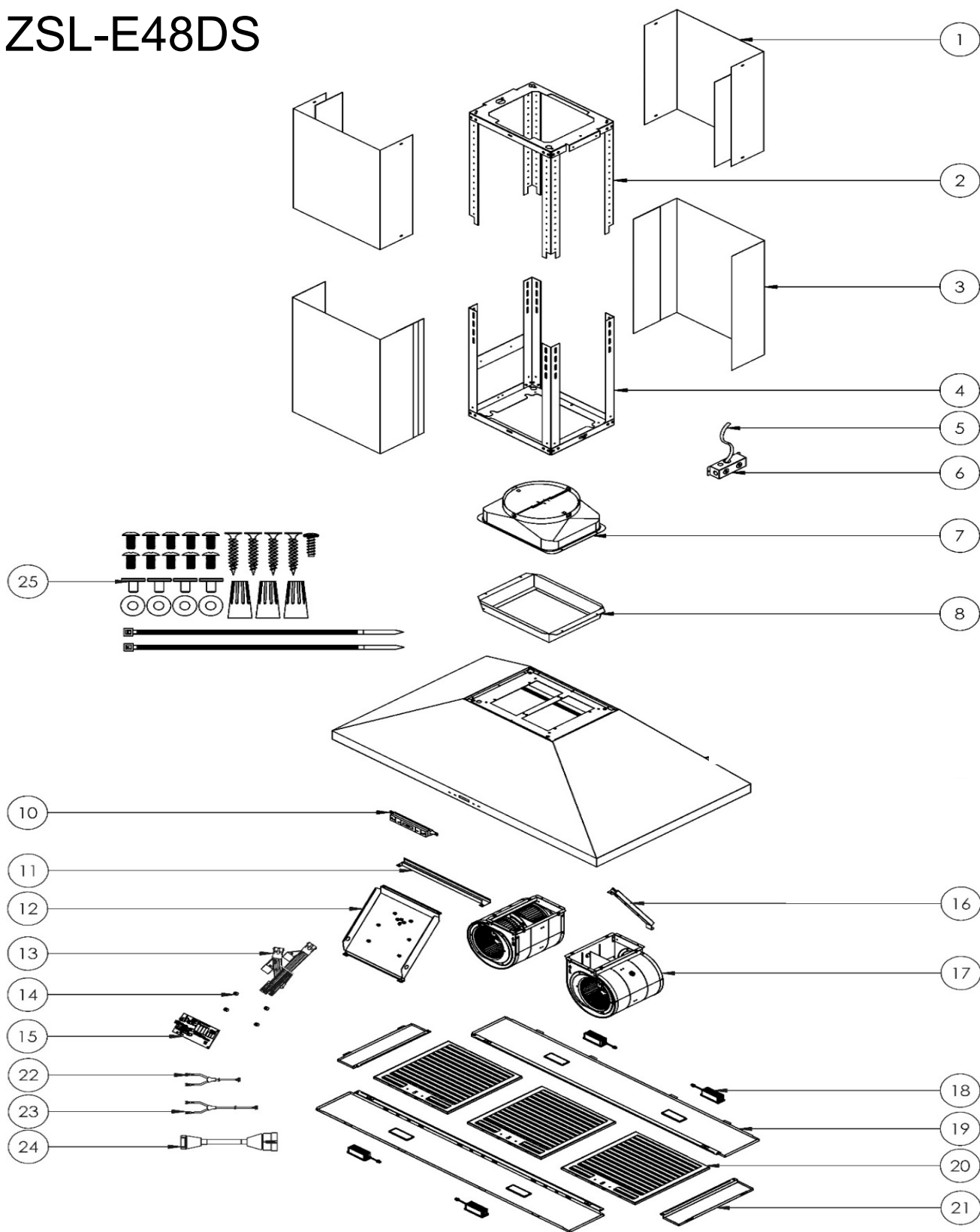


ZSL-E36DS
ZSL-E42DS
ZSL-E48DS

ZEPHYR



ZEPHYR

Siena Pro Island

ZSL-E36DS, ZSL-E42DS, ZSL-E48DS

Ref #	Part #	Description	Qty.
1	50050224	Upper Duct Cover	2
2	54110140	Upper Support Frame	1
3	50050225	Lower Duct Cover	2
4	54110141	Lower Support Frame	1
5	11030103	Power Cord	1
6	56200080	Electrical Box	1
7	54050081	10in Round Transition Collar	1
8	54050082	10in Collar Adaptor	1
10	11000183	ICON Touch LCD Switch Assembly	1
11	54140384	Control Board Bracket	1
12	54190087	Control Board Plate	1
13	12050044	Capacitor	1
14	56240022	PCB Spacer	4
15	11010192	Control Board	1
15-1	12170003	Control Board Fuse	1
16	54210047	Wiring Cover	1
17	12120103	Motor	2
18	Z0B0067	LumiLight LED, TruHue, 6W	4
19	50110460	Light Panel, ZSL-E36DS	2
19	50110455	Light Panel, ZSL-E42DS	2
19	50110456	Light Panel, ZSL-E48DS	2
19-1	01020024	Light Panel Screw	4
20	50210053	Hybrid Baffle Filter, 42" x 2	3
21	50120247	Side Panel, ZSL-E36DS	2
21	50120248	Side Panel, ZSL-E42DS	2
21	50120249	Side Panel, ZSL-E48DS	2

21-1	01020024	Side Panel Screw	4
22	11030206	LED Wiring Harness, 750mm	1
23	11030208	LED Wiring Harness, 1150mm	1
24	11030198	Switch Cable, PCB to Switch	1
25	05000121	Hardware Packet	1
26	81010007	Paper Ceiling Template	1

SEP25.0301